

Patient Monitoring

Product Catalog





TABLE OF CONTENTS

INTRODUCTION

■ BEDSIDE MONITORS	6
Life Scope® G9 Series Beside Monitors	
BSM-6000 Series Bedside Monitors	
Bedside Remote Displays	
BSM-3500 Series Bedside Monitors	
BSM-1700 Series Monitors	
■ ANESTHESIA GAS MONITORING MODULE	54
GF-210RA Multi-Gas Unit	
■ CAPNOGRAPHY	60
OLG-3800 Respiratory Monitor	
■ CENTRAL STATION	66
CNS-6801A Central Stations	
CNS Remote Client	
■ TELEMETRY	74
G3 Telemetry Monitoring	
ZM Telemetry Monitoring	
■ NK-HiQ™ PLATFORM & SERVER EXTENSIONS	88
NK-HiQ™ Enterprise Gateway	
HL7 Server Extension	
Wireless Assessment, Installation & Server Extension	
AWARE® Alarm Management and Reporting	
ViTrac® Server Extension	
NetKonnnect Gateway	
ReportKonnnect	
PAGER Server Extension	
ECG Server Extension	
■ SUPPORT/INSTALLATION	108
Clinical Support	
Aware Alarm Management Clinical Support	
Clinical Consultation Alarm Return Visit	
Enhanced Clinical Training	
Installation	

Introduction

Putting Patients First

At Nihon Kohden, every employee is driven by the idea that each patient touched by our products could be a member of our own family.

This belief is the origin of our commitment to the quality and reliability of our technology and services. It is also the reason we develop our products with our premium-as-standard philosophy and design it to work across the healthcare continuum, giving providers the ability to deliver care without compromise.

Because we know that every time one of our products is used, a person's life is at stake.

And we understand just how precious every life is.



Bedside Monitors

An integral part of Nihon Kohden's total monitoring system, our full-featured, high-performance bedside systems provide the comprehensive information that clinicians need, while helping to improve workflow.



Life Scope G9



BSM-6000 Series



Bedside Remote Displays



BSM-3500 Series



BSM-1700 Series



LIFE SCOPE G9 BEDSIDE MONITORS

Life Scope® G9 Bedside Monitor

Nihon Kohden's all-inclusive monitoring philosophy continues with the Life Scope G9. This full-featured system provides comprehensive parameter monitoring with data storage, including multi-waveform/multi-parameter full disclosure, comprehensive arrhythmia and ST segment analysis. It also includes a 12-lead ECG capability, and drug, hemodynamic and pulmonary calculations that ensure a high standard of monitoring care across patient conditions.

With drag-and-drop customizable caregiver-specific display options, the G9 can be personalized to each patient and caregiver regardless of the patient's health status or setting within the hospital — giving care teams the confidence that they have the right monitoring solution for each patient, every time.



LIFE SCOPE G9 SERIES PRODUCT FEATURES

- Life Scope G9 premium-as-standard design allows high-acuity care teams to be uniquely ‘patient ready’
- Acuity adaptable monitoring for patient-centered care across care areas settings
- High definition true-flat color LCD for precise waveform presentation
- Patient overview at a glance with G-Scope and up to 17 waveform display
- Customizable screen layouts provides personalized configuration of data based on preference or patient requirements
- Drag and Drop feature allows for rapid reconfiguration of screen layout
- Seamless transport and data continuity with the BSM-1700 creating one patient record that enhances workflow and care coordination
- Life Scope G9 uses Nihon Kohden’s unique Smart Cable technology for complete modular flexibility



COMPLETE KITS – STANDARD ACCESSORIES INCLUDED

22” LCD Touch Display G9 Main Units
with Data Acquisition Unit (DAU) and Input Unit (IU) or BSM-1700

PRODUCT #	ITEM
CSM-1971/ZA	7 Smart-Connectors with DAU and IU Nihon Kohden SpO ₂
CSM-1971-S-TP/ZA	7 Smart-Connectors with DAU and BSM-1700, Nihon Kohden SpO ₂
CSM-1972/ZA	7 Smart-Connectors with DAU and IU, Nellcor™ SpO ₂
CSM-1972-S-TP/ZA	7 Smart-Connectors with DAU and BSM-1700, Nellcor SpO ₂
CSM-1973ZA	7 Smart-Connectors with DAU and IU, Masimo® SpO ₂
CSM-1973-S-TP/ZA	7 Smart-Connectors with DAU and BSM-1700, Masimo SpO ₂

STANDARD ACCESSORIES

PRODUCT #	ITEM
CU-192RA	Life Scope G9 Main i-7 CPU Unit
A/NKD-CANVYS-21	22" wide CANVYS® LCD Touchscreen
YS-106P8	Branch Cable Display 2.8 m Display Serial
YS-107P2	DAU Cable, 3.0 m, DAU to DAU I/F
YL-920P	Alarm Indicator, Life Scope G9
A/615-10074-001	Alarm Indicator Basement
JA-694PA	DAU, 4 Multi-Connectors
JC-906PA	Patient Cable, 10 ft
BR-913PA	3 Lead Block, Snap Type
YN-901P	NIBP Cuff Hose, Adult
YP-713P	Reusable NIBP Cuff, Adult
YP-712P	Reusable NIBP Cuff, Child
SB-920P	Life Scope G9, CPU Battery
A/094577	Power Cord
A/PS-CANVYS	Canvys 24V Med PS power adaptor

LIFE SCOPE G9 SERIES (INPUT UNIT)

Nihon Kohden Items Included with Life Scope G9 Series Monitors (IU)

PRODUCT #	ITEM
AY-673P-QM	Input Unit 3MP with Nihon Kohden SpO ₂
JL-900P	Nihon Kohden SpO ₂ Connection Cable
TL-201T	SpO ₂ Finger Probe, Reusable

Nellcor Items Provided with Life Scope G9 Series Monitors (IU)

PRODUCT #	ITEM
AY-653P-QM	Input Unit, 3 MP, Nellcor
JL-650P	Nellcor SpO ₂ Connection Cable
A/MAXPAC	Nellcor Disposable SpO ₂ Probes (Set of 3)

Note: Additional disposable and non-disposable probes are available for purchase from the vendor.

Masimo Items Provided with Life Scope G9 Series Monitors (IU)

PRODUCT #	ITEM
AY-633P-QM	Input Unit, 3 MP, Masimo
JL-631P	Maimo LNCS SpO ₂ Connection Cable, 10 ft
A/1897	Masimo Disposable SpO ₂ Probes (Set of 3)

Note: Additional disposable and non-disposable probes are available for purchase from the vendor.

LIFE SCOPE G9 SERIES (TRANSPORT MONITOR)

Nihon Kohden Items Provided with Life Scope G9 Series Monitors (TPM)

PRODUCT #	ITEM
BSM-1773A	BSM-1700 TPM with Nihon Kohden SpO ₂
JL-900P	Nihon Kohden SpO ₂ Connection Cable
TL-201T	SpO ₂ Finger Probe, Reusable

Nellcor Item Provided with Life Scope G9 Series Monitors (TPM)

PRODUCT #	ITEM
BSM-1753A	BSM-1700 TPM with Nellcor SpO ₂
JL-650P	Nellcor SpO ₂ Connection Cable
A/MAXPAC	Nellcor Disposable SpO ₂ Probes (Set of 3)

Note: Additional disposable and non-disposable probes are available for purchase from the vendor.

Masimo Items Provided with Life Scope G9 Series Monitors (TPM)

PRODUCT #	ITEM
BSM-1733A	BSM-1700 TPM with Masimo SpO ₂
JL-631P	Masimo LNCS SpO ₂ Connection Cable, 10 ft
A/1897	Masimo Disposable SpO ₂ Probes (Set of 3)

Note: Additional disposable and non-disposable probes are available for purchase from the vendor.

OPTIONAL ADD-ONS

Optional Item for Life Scope G9 Series Monitors

PRODUCT #	ITEM
A/BARCODE	Barcode Reader

Multi-Port Expansion for Life Scope G9 Series Monitors

PRODUCT #	ITEM
AA-674P	4 Multi-Port Expansion <ul style="list-style-type: none"> • Mounts to Input Unit and increases total number of Multi-Ports to 11 • Cannot be used with BSM-1700 equipped models

Recorder Options for Life Scope G9 Series Monitors

PRODUCT #	ITEM
WS-960P-D-S	3 Channel Recorder (WS-960P-01A) with 3 m Cable
A/FQW-50-2-100	3 Recording Paper (Box of 10)

Dual Display Options for G9 Series Monitor

PRODUCT #	ITEM
1901-D/ZA	G9 Dual Display Option, CANVYS 22", Kit

Triple Display Options for Life Scope G9

PRODUCT #	ITEM
1901-T/ZA	G9 Triple Display Option, CANVYS 22", Kit <ul style="list-style-type: none"> • Requires 2nd display option 1901-D/ZA installed

OPTIONAL ADD-ONS (CONTINUED)

Remote Control Options

PRODUCT #	ITEM
RY-910PA	Remote Controller

Life Scope G9 Series Monitor Main Unit and Display Mounting Options

PRODUCT #	ITEM
G9-PIVOT/ZA	Pivot Mounting Arm Kit for Life Scope G9 <ul style="list-style-type: none"> Includes: 16" Pivot Arm (A/FLP-0009-03) and Flush Mount for Life Scope G9 Main Unit (A/0055-63) and VESA display mount. (Down pole and Pole clamp for DAU is ordered separately) Mounts main unit on the same wall channel as the display
G9-VHM/ZA	Vertical Height Adjustable Arm Kit for Life Scope G9 <ul style="list-style-type: none"> Includes: VHM-PL Arm (A/WS-0012-73) and Flush Mount for Life Scope G9 Main Unit (A/0055-63) VESA display mount. (Down pole and Pole clamp for DAU is ordered separately) Mounts main unit on the same wall channel as the display
A/WC-0002-04	19" Wall Channel for all Arms
A/WMM-0006-04	Utility Hook for Cable Management (All Arms)
A/DU-NK-0055-60	Roll Stand for Life Scope G9 <ul style="list-style-type: none"> GCX Roll Stand with Basket and Handle for Life Scope G9 bedside monitors, mounting for MPU, DAU & display Includes adaptor plate for monitor

To mount the Life Scope G9 to an anesthesia cart, such as Dräger Primus® or GE Aespire®, order the correct parts.

See Appendix 2 of the configuration guide or the GCX website, call 1.800.228.2555 or contact your local GCX sales representative.

These GCX components can be included manually with the quote. Contact your Nihon Kohden sales representative to assist you.

Amico also offers solutions for G9. Please see the Amico Website for more details.

DAU Mounting Options for Life Scope G9

PRODUCT #	ITEM
A/0053-01	Handle for AY-600 Series Input Units
YS-096P6	Locking Assembly to Prevent Removal of Input Unit
A/0050-01	Pole Clamp for Data Acquisition Unit
A/WMM-0006-02C	12" Down pole for Mounting DAU below Monitor <ul style="list-style-type: none"> Requires A/0050-01 pole clamp
NK-DAU-WALL-MNT	Wall Mount for Data Acquisition Unit <ul style="list-style-type: none"> Includes 12" pivot arm, 8" Up Post, and 7" wall channel Requires A/0050-01 pole clamp

Life Scope G9 External Device Options

Three external devices can be connected to the main unit, and two can be connected to the DAU. If additional external devices are required, use the junction box below:

PRODUCT #	ITEM
JA-920P/ZA	External Device Junction Box Kit <ul style="list-style-type: none"> Allows up to six additional external device interfaces to be connected to the Life Scope G9 Includes YS-107P6
YS-107P6	3 m External Device Smart Connection Cable, G9
QF-901P	Device Interface for Dräger Evita® 2, Evita 2 Dura, Evita 4, Evita XL, and Savina® ventilators
QF-902P	Device Interface for (Medtronic) Aspect BIS™ A-2000, Vista or View monitors
QF-904P	Device Interface for Nihon Kohden AG-920RA Multi-Gas Module
QF-907P	Device Interface for Nellcor Puritan Bennett™ 740, 760 and 840 Ventilators
QF-908P	Device Interface for Maquet SERVO-i® and SERVO-s® Ventilators
QF-911P	Device Interface for PULSION Medical Systems SE PiCCO™ technology monitors, PiCCO plus®/PiCCO2®
IF-912P	Device Interface to display an external analog waveform

Life Scope G9 External Device Options (Continued)

PRODUCT #	ITEM
IF-913P	Device Interface for Radiometer Transcutaneous monitors, MicroGas 7650
IF-914P	Device Interface for Radiometer Transcutaneous monitors, TCM4/TCM40
IF-916P	Device Interface for Newport Medical Ventilator, e360/e500
IF-917P	Device Interface for Hamilton Medical Ventilators, • Models Galileo, Raphael, G5, and C2
IF-919P	Device Interface for Covidien®-Nellcor OxiMax™ N-600x™ Pulse Oximeter • Allows for dual SpO ₂ monitoring
IF-920P	Device Interface for Dräger Medical Anesthesia Workstations • Primus, Primus Infinity®, Empowered, Apollo®, Pallas®, Fabius GS®, Fabius GS Premium, Fabius Tiro®, and Fabius Plus
IF-922P	Device Interface for Hospira® Q-Vue™, Q2, and Q2 • Plus CCO/SO ₂ Monitors
IF-923P	Device Interface for Puritan Bennett 7200 Ventilators
IF-925P	Device Interface for Masimo Pulse Oximeters, Radical® • Radical 7®, Rad-8® and Rad-87™ • Allows for Dual SpO ₂ Monitoring
IF-927P	External Interface for Carefusion® AVEA® and VELA® Ventilators
IF-928P	Device Interface for Dräger Medical Babylog® 8000 Plus
IF-930P	Device Interface for GE® Healthcare Aisys® Avance® System
IF-932P	Device Interface for Maquet Flow-I Anesthesia Workstations
IF-937P	Interface for Covidien INVOS™ 5100C Cerebral Oximeter
IF-944P	Device Interface for HAMILTON-C1 and T1 Ventilators to BSM-6000/G9
IF-946P	Device Interface for LiDCO Rapid/Plus Hemodynamic • BSM-6000/Life Scope G9
IF-948P	External Interface Support for Edwards Lifesciences HemoSphere CCO Monitor

PRODUCT #	ITEM
IF-950P	Device Interface for Dräger A500 Perseus Anesthesia System
IF-951P	Device Interface Cable for Maquet Servo-U®/Servo-n® Ventilators
IF-955P	Device Interface Cable for Masimo Radical 7, Rainbow
IF-956P	Device Interface Cable for Medtronic PB980 ventilator
IF-957P	External Interface Support for Cheetah Medical NICOM/Starling SV Hemodynamic Monitor
IF-958P	Device Interface Cable for Medtronic A-3100C BIS
IF-961P	Device Interface Cable for Philips Respironics V60 ventilator
IF-963P	Device Interface Cable for CasMed Fore-Sight Elite
IF-19004	Device Interface Cable for Mindray A7, A5 and A3
YJ-910P	ECG/BP Output Cable, 5 m, End is Unterminated
YJ-920P	ECG/BP Output Cable, 0.3 m, Dual ¼" Jacks • (ECG/BP Output cables connect directly to the Input Unit)
YS-094P2	RS-232 Cable, G9 Vital Signs Data Export

ADDITIONAL CABLE LENGTHS

Serial Branch Cable Alternative Lengths (one YS-106P8 included in the kit)

PRODUCT #	ITEM
YS-106P7	Branch Cable (DVI, Serial, Sound and Alarm indicator), 0.9 m
YS-106P8	Branch Cable (DVI, Serial, Sound, Alarm indicator), 2.8 m
YS-106P9	Branch Cable (DVI, Serial, Sound, Alarm indicator), 5 m
YS-107P0	Branch Cable (DVI, Serial, Sound, Alarm indicator), 10 m
G9-KVM/ZA	Branch cable KVM extension Kit, for G9 2nd display (up to 300 ft)

DAU to G9 Connection Cable Alternative Lengths (one YS-106P2 included in the kit)

PRODUCT #	ITEM
YS-107P1	G9 Unit Connection Cable from G9 to DAU, 1 m
YS-107P2	G9 Unit Connection Cable from G9 to DAU, 2.8 m
YS-107P3	G9 Unit Connection Cable from G9 to DAU, 5 m
YS-107P4	G9 Unit Connection Cable from G9 to DAU, 10 m
YS-19003	G9 Unit Connection Cable from G9 to DAU, 30 m • Requires signed customer consent letter (No transport)

G9 Recorder Cable Alternative Lengths (one YS-106P2 included in the kit)

PRODUCT #	ITEM
YS-107P9	G9 Recorder Cable, 1 m
YS-108P0	G9 Recorder Cable, 3.8 m
YS-108P1	G9 Recorder Cable, 5 m
YS-108P2	G9 Recorder Cable, 10 m

BSM-6000

BSM-6000 Series Bedside Monitors

Premium-as-Standard Design

We believe every patient deserves the highest standard of care. Nihon Kohden's premium-as-standard philosophy is the belief that every monitor should be fully appointed with features—both standard and premium—unlocked and ready to use at a moment's notice. This ensures that our technology can be employed in the broadest range of acuity levels and seamlessly transition between care areas as patient need dictates.

No patient monitoring system can be complete without an integrated transport solution. The unique design of the Data Acquisition Unit (DAU) and BSM-1700 transport unit redefines transport monitoring. It is compact, has memory expansion and moves with the patient. The BSM-1700 easily integrates with the BSM-6000 Series monitors. During transport, simply remove the BSM-1700 and transport the patient without worrying about disconnecting or reconnecting cables. At the conclusion of transporting the patient, simply

connect the BSM-1700 to another host monitor and maintain a seamless patient record throughout the patient stay.

To optimize your investment, all Nihon Kohden bedside monitors include a 5-year parts and labor warranty, software enhancements and upgrades, and 24/7 clinical and technical support, providing unsurpassed quality, reliability and customer support.

Only Nihon Kohden offers complete, integrated multi-modality products that serve patients across all care areas. We bring clinical solutions that provide access to a deeper, more comprehensive level of information, enabling more accurate diagnoses and ultimately, better outcomes.



BSM-6000 SERIES CAPABILITIES

- Comprehensive arrhythmia detection and recall, including advanced Atrial Fibrillation algorithm
- Multi-waveform/multi-parameter full disclosure
- ST segment analysis as well as diagnostic 12 lead ECG capability
- Drug, hemodynamic and pulmonary calculations



COMPLETE KITS – STANDARD ACCESSORIES INCLUDED



10.4" LCD Display Main Units
with Input Unit or BSM-1700 Transport Monitor

PRODUCT #	ITEM
BSM-6311-S	1 Smart-Connector with Nihon Kohden SpO ₂
BSM-6312-S	1 Smart-Connector with Nellcor SpO ₂
BSM-6313-S	1 Smart-Connector with Masimo SpO ₂
BSM-6331-S	3 Smart-Connectors with Nihon Kohden SpO ₂
BSM-6332-S	3 Smart-Connectors with Nellcor SpO ₂
BSM-6333-S	3 Smart-Connectors with Masimo SpO ₂
BSM-6331-S-TP	3 Smart-Connectors, BSM-1700, Nihon Kohden SpO ₂
BSM-6332-S-TP	3 Smart-Connectors, BSM-1700, Nellcor SpO ₂
BSM-6333-S-TP	3 Smart-Connectors, BSM-1700, Masimo SpO ₂



12.1" LCD Display Main Units
with Input Unit or BSM-1700 Transport Monitor

PRODUCT #	ITEM
BSM-6531-S	3 Smart-Connectors with Nihon Kohden SpO ₂
BSM-6532-S	3 Smart-Connectors with Nellcor SpO ₂
BSM-6533-S	3 Smart-Connectors with Masimo SpO ₂
BSM-6531-S-TP	3 Smart-Connectors, BSM-1700, Nihon Kohden SpO ₂
BSM-6532-S-TP	3 Smart-Connectors, BSM-1700, Nellcor SpO ₂
BSM-6533-S-TP	3 Smart-Connectors, BSM-1700, Masimo SpO ₂
BSM-6571-S	7 Smart-Connectors with Nihon Kohden SpO ₂
BSM-6572-S	7 Smart-Connectors with Nellcor SpO ₂
BSM-6573-S	7 Smart-Connectors with Masimo SpO ₂
BSM-6571-D-S	7 Smart-Connectors with Nihon Kohden SpO ₂ , DAU
BSM-6572-D-S	7 Smart-Connectors with Nellcor SpO ₂ , DAU
BSM-6573-D-S	7 Smart-Connectors with Masimo SpO ₂ , DAU
BSM-6571-D-S-TP	7 Smart-Connectors, BSM-1700, Nihon Kohden SpO ₂ , DAU
BSM-6572-D-S-TP	7 Smart-Connectors, BSM-1700, Nellcor SpO ₂ , DAU
BSM-6573-D-S-TP	7 Smart-Connectors, BSM-1700, Masimo SpO ₂ , DAU



15" LCD Display Main Units with Input Unit or BSM-1700 Transport Monitor

PRODUCT #	ITEM
BSM-6731-S	3 Smart-Connectors with Nihon Kohden SpO ₂
BSM-6732-S	3 Smart-Connectors with Nellcor SpO ₂
BSM-6733-S	3 Smart-Connectors with Masimo SpO ₂
BSM-6731-S-TP	3 Smart-Connectors, BSM-1700, Nihon Kohden SpO ₂
BSM-6732-S-TP	3 Smart-Connectors, BSM-1700, Nellcor SpO ₂
BSM-6733-S-TP	3 Smart-Connectors, BSM-1700, Masimo SpO ₂
BSM-6771-S	7 Smart-Connectors with Nihon Kohden SpO ₂
BSM-6772-S	7 Smart-Connectors with Nellcor SpO ₂
BSM-6773-S	7 Smart-Connectors with Masimo SpO ₂
BSM-6771-D-S	7 Smart-Connectors with Nihon Kohden SpO ₂ , DAU
BSM-6772-D-S	7 Smart-Connectors with Nellcor SpO ₂ , DAU
BSM-6773-D-S	7 Smart-Connectors with Masimo SpO ₂ , DAU
BSM-6771-D-S-TP	7 Smart-Connectors, BSM-1700, Nihon Kohden SpO ₂ , DAU
BSM-6772-D-S-TP	7 Smart-Connectors, BSM-1700, Nellcor SpO ₂ , DAU
BSM-6773-D-S-TP	7 Smart-Connectors, BSM-1700, Masimo SpO ₂ , DAU

STANDARD ACCESSORIES

Standard Accessories for BSM-6000 Series

PRODUCT #	ITEM
JC-906PA	Patient Cable, 10 ft
BR-913PA	3 Lead Block, Snap Type
YN-901P	NIBP Cuff Hose, Adult
YP-713T	Reusable NIBP Cuff – Adult
YP-712T	Reusable NIBP Cuff – Child
A/094577	Power Cord

OPTIONAL ADD-ONS

Optional Accessories for BSM-63xx-S

PRODUCT #	ITEM
JA-694PA-S	Data Acquisition Unit, Remote Input plus 4 Smart-Connectors
QI-631P	External I/F Board, Second Video Output and RS-232C Output
QI-632P	External I/F Board, 1 External device interface, 1 USB, and Alarm Output
QI-634P	External I/F Board, 3 External device interfaces, 1 USB

Note: A monitor can use one QI-631P and one QI-632P, or only one QI-634P. A QI-632P cannot be used with a QI-634P in one monitor.

Optional Accessories for BSM-65xx-S and 67xx-s

PRODUCT #	ITEM
QI-671P	External I/F Board, Second Video Output, 1 External Device, RS-232C Output and Alarm Output
QI-672P	External I/F Board, 4 External Device Interfaces and 2 USB

Note: A monitor can use one QI-671P and one QI-672P only.

Optional Accessories for BSM-6000 Series Monitor

PRODUCT #	ITEM
A/0053-01	Handle for AY-600 Series Input Units
A/BARCODE	Barcode Scanner, USB • Requires QI-632P or QI-634P for BSM-63xx or QI- 672P for BSM-65xx/67xx Monitors
RY-910PA	Remote Controller
WS-671P	BSM-6000 Three Channel Recorder
A/FQW-50-2-100	Recording Paper (Box of 10)
SB-671P	Battery for BSM-6000 (can use 2 per monitor)
YS-096P6	Locking assembly to prevent removal of input unit
YS-096-P5	Multilink Cable to activate DAU IF Ports (requires Ext IF board)

Communications Options for BSM-6000 Series Monitor

PRODUCT #	ITEM
QI-320PA-6	Wireless LAN Installation Package, 802.11A/B/G • Billed as an installation charge with no discounting applicable • Requires an installation charge for an area to be covered by wireless system

BSM-6000 Mounting Options

PRODUCT #	ITEM
A/0071-16	BSM-5100/6000 Mounting Adaptor Plate (Required for wall mounts)
A/WMM-0002-02	Pivoting Support Arm
A/WS-0012-01	ARM, Vertical Height VHM-PL BSM-3500 BSM-6000
A/WC-0002-04	Wall Channel for all Arms
A/WMM-0006-04	Utility Hook for Cable Management (All Arms)
NK-RS-5100	BSM-5100/6000 Roll Stand with Basket and Handle
A/0049-80	Bed Rail Hook/Handle for BSM-6300 Monitors

DAU Mounting Options

PRODUCT #	ITEM
A/0050-01	Pole Clamp for Data Acquisition Unit
A/WMM-0006-01	6" pole for use with height adjustable and fixed arms • Requires A/0050-01 Pole Clamp
NK-DAU-WALL-MNT	Wall Mount for Data Acquisition Unit • Includes 12" Pivot Arm, 8" Up Post and 7" wall channel • Requires an NK-0050-01 Pole Clamp

BSM-6000 Series External Device Options

Requires QI-632P, QI-634P, QI-671P or QI-672P Board

PRODUCT #	ITEM
QF-901P	Device Interface for Dräger EVITA 2, EVITA 2 Dura, EVITA 4, EVITA XL, and Savina Ventilators
QF-902P	Device Interface for Aspect BIS A-2000, Vista or View Monitors
QF-903P	Device Interface for Edwards Lifesciences Vigilance, Vigilance II, and Vigileo CCO/SvO ₂ Monitors
QF-904P	Device Interface for AG-920RA Multi-Gas Unit
QF-907P	Device Interface for Puritan Bennett 740, 760 and 840 Ventilators
QF-908P	Device Interface for MAQUET Servo-i and Servo-s Ventilators
QF-911P	Device Interface for Pulsion Medical System PiCCO Technology Monitors, PiCCO Plus/PiCCO ₂
IF-912P	Device Interface to Display External Analog Waveforms on the BSM
IF-913P	Device Interface for Radiometer Transcutaneous Monitors, MicroGas 7650
IF-914P	Device Interface for Radiometer Transcutaneous Monitors, TCM4/TCM40
IF-916P	Device Interface for Newport Medical Ventilator, e360/e500
IF-917P	Device Interface for Hamilton Medical Ventilators, models: Galileo, Raphael, G5 and C2
IF-919P	Device Interface for Covidien-Nellcor OxiMax N-600x Pulse Oximeter • Allows for dual SpO ₂ monitoring

BSM-6000 Series External Device Options (continued)

PRODUCT #	ITEM
IF-920P	Device Interface for Dräger Medical Anesthesia Workstations, Primus, Primus Infinity, Empowered, Apollo, Pallas, Fabius GS, Fabius GS Premium, Fabius Tiro, and Fabius plus
IF-922P	Device Interface for Hospira Q-Vue, Q2, and Q2 Plus CCO/SO2 monitors
IF-923P	Device Interface for Puritan Bennett 7200 Ventilators
IF-925P	Device Interface for Masimo Pulse Oximeters, Radical, Radical 7, Rad-8 and Rad-87 <ul style="list-style-type: none"> • Allows for dual SpO₂ monitoring
IF-927P	External Interface for Carefusion AVEA and VELA Ventilators
IF-928P	External Interface for Dräger Babylog Ventilators
IF-930P	External Interface for GE Aisys, Avance, Aespaire, and Aestive Anesthesia Workstations
IF-932P	Device Interface for Maquet Flow-I Anesthesia Workstations
IF-935P	External Interface for GE Engstrom® Ventilator
IF-937P	External Interface for Covidien INVOS 5100c Cerebral Oximeter
IF-939P	External Interface for GE Centiva Ventilators
IF-942P	External Interface for Dräger Evita InfinityH V500 and Oxylog® 3000 Ventilators
IF-943P	External Interface for Dräger Babylog VN500 Ventilators
IF-948P	External Interface for Edwards Lifesciences EV-1000 Hemodynamic Monitors
IF-950P	Device Interface for Dräger A500 Perseus Anesthesia System
IF-951P	Device Interface Cable for MAQUET Servo-U/n® Ventilators
IF-954P	External Interface for for Mindray A3/A5/A7 anesthesia workstation
IF-955P	External Interface for Masimo Radical-7 pulse oximeter (Rainbow)
IF-956P	External Interface for Medtronic PB980 Ventilator

BSM-6000 Series External Device Options (continued)

PRODUCT #	ITEM
IF-957P	External Interface Support for Cheetah Medical NICOM/Starling SV Hemodynamic Monitor
IF-958P	External Interface for Medtronic/Covidien BIS Monitor
IF-961P	External Interface for Philips Respironics V60 Ventilator
IF-963P	Device Interface Cable for CasMed Fore-Sight Elite
YJ-910P	ECG/BP Output Cable, 5 m, End is Unterminated
YJ-920P	ECG/BP Output Cable, 0.3 m, Dual ¼" Jacks <ul style="list-style-type: none"> • ECG/BP Output cables connect directly to the Input Unit
A/511680	RS-232 Export Cable, 6 ft DB9 F/F Null Modem
A/10D1-20206	CABLE, 6 ft DB9 M/F, MODEM/SERIAL BSM

Bedside Remote Displays

Bedside Remote Display Options for BSM-6000 that Include Displays

PRODUCT #	ITEM
NK-REMOTE-19X1	19" LCD Non-Interactive Remote for Bedside Monitor <ul style="list-style-type: none"> • Provides for viewing of a bedside monitor display at a remote location, includes display and Ethernet video splitter and driver • Bedside Monitor must be equipped with an optional board that provides video output capability • The display can be located up to 360 ft from the BSM
NK-REMOTE-19X2	19" LCD Non-Interactive Dual Remote for Bedside Monitor <ul style="list-style-type: none"> • Provides for viewing of bedside monitor display at 2 remote locations • Includes displays and an Ethernet video splitter and drivers • The bedside monitor must be equipped with optional board that provides video output capability • Displays can be located up to 360 ft from the BSM
NK-REMOTE-19X3	19" LCD Non-Interactive Triple Remote for Bedside Monitor <ul style="list-style-type: none"> • Provides for viewing of Bedside Monitor display at 3 remote locations • Includes displays and an Ethernet video splitter and drivers • The bedside monitor must be equipped with optional board that provides video output capability • Displays can be located up to 360 ft from the BSM
NK-REMOTE-19X4	19" LCD Non-Interactive Quad Remote for Bedside Monitor <ul style="list-style-type: none"> • Provides for viewing of Bedside Monitor display at 4 remote locations • Includes displays and an Ethernet video splitter and drivers • The bedside monitor must be equipped with optional board that provides video output capability • Displays can be located up to 360 ft from the BSM

Bedside Remote Display Options for BSM-6000 Without Any Displays

Customer to Provide Compatible Display LCD Displays and Mounts

PRODUCT #	ITEM
NK-REMOTE-X1	Non-Interactive Remote for Bedside Monitor, no display <ul style="list-style-type: none"> • Provides for viewing of Bedside Monitor display at a remote location on a customer-provided display • Includes Ethernet video splitter and driver • Bedside Monitor must be equipped with optional board that provides video output capability • Display may be located up to 360 ft from the Bedside Monitor
NK-REMOTE-X2	Non-Interactive Dual Remote for Bedside Monitor, No Displays <ul style="list-style-type: none"> • Provides for viewing of Bedside Monitor display at two remote locations on customer provided displays • Includes Ethernet video splitter and driver • Bedside Monitor must be equipped with optional board that provides video output capability • Display may be located up to 360 ft from the Bedside Monitor
NK-REMOTE-X3	Non-Interactive Triple Remote for Bedside Monitor, No Displays <ul style="list-style-type: none"> • Provides for viewing of Bedside Monitor display at three remote locations on customer provided displays • Includes Ethernet video splitter and driver • Bedside Monitor must be equipped with optional board that provides video output capability • Display may be located up to 360 ft from the Bedside Monitor
NK-REMOTE-X4	Non-Interactive Quad Remote for Bedside Monitor, No Displays <ul style="list-style-type: none"> • Provides for viewing of Bedside monitor display at four remote locations on customer provided displays. • Includes Ethernet video splitter and driver. • Bedside Monitor must be equipped with optional board that provides video output capability. • Display may be located up to 360 ft from the Bedside Monitor.

LCD Displays and Mounts

PRODUCT #	ITEM
A/PLANAR-19	19" LCD Display
A/PLANAR-24	24" LCD Display
NK-FLUSHMNT- LCD	Flush Wall Mount for 17", 19" or 24" LCD Displays <ul style="list-style-type: none"> • Includes a flush mount and wall channel

BSM-3500 Series Bedside Monitors

The BSM-3500 offers unrivaled technology that works across the healthcare continuum, allowing providers to deliver care without compromise.

From ambulatory and specialty surgery centers, the BSM-3500 brings quality, yet affordable monitoring that is designed specifically for the care delivered – ensuring that you are able to provide the highest quality of care for any procedure or treatment without compromise.



FEATURES

- BSM-3500 premium-as-standard* design allows providers to deliver care without compromise
- Compact configured monitor with intuitive touchscreen user interface
- ECG, Respiration, SpO₂, IBP, NIBP, dual temperature and plug-in 3 channel recorder capability
- Comprehensive arrhythmia detection and recall with ST segment analysis and diagnostic 12 lead ECG
- Multi-waveform/multi-parameter full disclosure
- BSM-3500 uses Nihon Kohden's unique Smart Cable technology for complete modular flexibility
- cap-ONE® mainstream CO₂ sensor kit for non-intubated and intubated patients
- Central station, external device interface and EMR compatibility

COMPLETE KIT – STANDARD ACCESSORIES INCLUDED

12.4" LCD Display Configured Patient Monitor

PRODUCT #	ITEM
BSM-3572A/ZA	2 Smart-Connectors with Nihon Kohden SpO ₂
BSM-3572A-QI/ZA	2 Smart-Connectors with Nihon Kohden SpO ₂ , VGA, and 2 I/F ports
BSM-3552A/ZA	2 Smart-Connectors with Nellcor SpO ₂
BSM-3552A-QI/ZA	2 Smart-Connectors with Nellcor SpO ₂ , VGA, and 2 I/F ports
BSM-3532A/ZA	2 Smart-Connectors with Masimo SpO ₂
BSM-3532A-QI/ZA	2 Smart-Connectors with Masimo SpO ₂ , VGA, and 2 I/F ports
BSM-3572A-Q2/ZA	BSM-3572 12", 2MP, Nihon Kohden SpO ₂ , 2I/F/RS232/NC
BSM-3552A-Q2/ZA	BSM-3552 12", 2MP, Nellcor SpO ₂ , 2I/F/RS232/NC
BSM-3532A-Q2/ZA	BSM-3532 12", 2MP, Masimo SpO ₂ , 2I/F/RS232/NC

* iNIBP not included as standard, but is optional

ACCESSORIES

Standard Accessories for BSM-3500 Series

PRODUCT #	ITEM
JC-906PA	Patient Cable, 10 ft
BR-913PA	3 Lead Block, Snap Type
YN-901P	NIBP Cuff Hose, Adult
YP-713T	Adult NIBP Cuff
YP-712T	Child NIBP Cuff
A/094577	Power Cord Operator's Manual, CD

Optional Accessories for BSM-3500

PRODUCT #	ITEM
RY-910PA	Remote Controller
WS-371P	BSM-3500 Three Channel Recorder
A/FQW-50-2-100	Recording Paper (Box of 10)
SB-671P	Battery for BSM-3000 and BSM-6000 (can use 1 per monitor)
#QP-038P	iNIBP option for BSM-3500 series monitor

OPTIONAL ADD-ONS

Wireless Communications Options

PRODUCT #	ITEM
QI-320PA-6	Wireless LAN Installation Package, 802.11A/B/G <ul style="list-style-type: none"> • Billed as an installation charge with no discounting applicable • Requires an installation charge for the area to be covered by the wireless system. • Note: requires special approval

BSM-3500 Mounting Options

PRODUCT #	ITEM
A/0051-16	BSM-3500 Mounting Adaptor Plate (Required for wall mounts)
A/WMM-0002-02	Pivoting Support Arm
A/WS-0004-20	Vertical Height Adjustable Arm
A/WC-0002-04	Wall Channel for all Arms
A/WMM-0006-04	Utility Hook for Cable Management (All Arms)
RS-3500/ZA	BSM-3500 Roll Stand, Mount Plate with Basket and Handle

External Device Options

Only compatible with BSM-35xxA-QI/ZA monitors

PRODUCT #	ITEM
QF-901P	Device Interface for Dräger EVITA 2, EVITA 2 Dura, EVITA 4, EVITA XL, and Savina Ventilators
QF-902P	Device Interface for Aspect BIS A-2000, Vista or View Monitors
QF-903P	Device Interface for Edwards Lifesciences Vigilance, Vigilance II, and Vigileo CCO/SvO2 Monitors
QF-904P	Device Interface for AG-920RA Multi-Gas Unit
QF-907P	Device Interface for Puritan Bennett 740, 760 and 840 Ventilators
QF-908P	Device Interface for MAQUET Servo-i and Servo-s Ventilators
QF-911P	Device Interface for Pulsion Medical System PiCCO technology Monitors, PiCCO Plus/PiCCO ₂
IF-912P	Device Interface to display an external analog waveform
IF-913P	Device Interface for Radiometer Transcutaneous Monitors, MicroGas 7650
IF-914P	Device Interface for Radiometer Transcutaneous Monitors, TCM4/TCM40
IF-917P	Device Interface for Hamilton Medical Ventilators, models Galileo, Raphael, G5, and C2
IF-919P	Device Interface for Covidien-Nellcor OxiMax N-600x Pulse Oximeter <ul style="list-style-type: none"> • Allows for dual SpO₂ monitoring
IF-920P	Device Interface for Dräger Medical Anesthesia Workstations, Primus, Primus Infinity, Empowered, Apollo, Pallas, Fabius GS, Fabius GS Premium, Fabius Tiro, and Fabius Plus
IF-922P	Device Interface for Hospira (Abbott) Q-Vue, Q2, and Q2 Plus CCO/SO ₂ Monitors
IF-923P	Device Interface for Puritan Bennett 7200 Ventilators
IF-925P	Device Interface for Masimo Pulse Oximeters, Radical, Radical 7, Rad-8 and Rad-87. Allows for Dual SpO ₂ Monitoring
IF-928P	Device Interface for Dräger Medical Babylog 8000 Plus

PRODUCT #	ITEM
IF-930P	Device Interface for GE Healthcare AISYS Avance System
IF-932P	Device Interface for Maquet Flow-I Anesthesia Workstations
IF-935P	Communication Cable for GE Healthcare Ventilator
IF-937P	Interface for Covidien INVOS 5100C Cerebral Oximeter
IF-939P	Interface for GE Healthcare Centiva/5 Critical Care Ventilator
IF-942P	Dräger Medical Evita Infinity V500 Ventilator
IF-943P	Dräger Medical Dräger Medical Babylog VN500 Ventilator
IF-944P	Device interface for Hamilton Medical C1 and T1 ventilators to BSM-6000/G9
IF-946P	Device interface for LiDCO Rapid/Plus Hemodynamic Monitor to BSM-6000/Life Scope G9
IF-948P	External Interface Support for Edwards Lifesciences HemoSphere CCO Monitor
IF-950P	Device Interface for Dräger A500 Perseus Anesthesia System
IF-951P	Device Interface Cable for MAQUET Servo-U®/Servo-n® Ventilators
IF-954P	External Interface for Mindray A3/A5/A7 Anesthesia Workstation
IF-956P	External Interface for Medtronic PB980 Ventilator
IF-957P	External Interface Support for Cheetah Medical NICOM/Starling SV Hemodynamic Monitor
IF-958P	External Interface for Medtronic/Covidien BIS Monitor
IF-961P	External Interface for Philips Respironics V60 Ventilator
IF-963P	Device Interface Cable for CasMed Fore-Sight Elite
YJ-910P	ECG/BP Output Cable, 5 m, End is Unterminated
YJ-920P	ECG/BP Output Cable, 0.3 m, Dual ¼" Jacks <ul style="list-style-type: none"> • ECG/BP Output cables connect directly to the Input Unit

BSM-1700 Series Monitors

During transport, it is important to maintain a high standard of care regardless of the patient's acuity level or location. Setting a new standard in transport monitoring, Nihon Kohden's model BSM-1700 can be used as both a stand-alone transport device, or as part of an enterprise monitoring system.

When connected to a Nihon Kohden bedside monitor, the BSM-1700 acts as both an input device and as a transport monitor. When you are ready to transport your patient simply disconnect the BSM-1700 from the host bedside monitor and your patient can be transported with full monitoring capabilities. When the patient arrives at their new care setting and the BSM-1700 is reconnected to a host monitor, patient information, including full disclosure, arrhythmia recall files, tabular and graphics trends and ST data is automatically uploaded to our enterprise monitoring system creating one seamless patient record.



FEATURES

- Functions as a compact transport monitor, stand-alone monitor, or as an Input Unit for the BSM-6000 or Life Scope G9 series bedside monitors
- Allows seamless transfer of data between bedside monitors and central stations
- 5-hour battery life
- Lightweight at only 3.4 lbs.
- High-resolution touch screen display
- Comprehensive data storage
 - 72 hours full disclosure waveforms locally on monitor
 - 120 hours full disclosure review on central station (when networked)
 - Tabular & graphical trends
 - Arrhythmia recall files
 - ST recall files

COMPLETE KITS – STANDARD ACCESSORIES INCLUDED

BSM-1700 Transport Monitor

PRODUCT #	ITEM
BSM-1773-S	BSM-1700 Transport Monitor with 3 MP Nihon Kohden SpO ₂
BSM-1753-S	BSM-1700 Transport Monitor with 3 MP Nellcor SpO ₂
BSM-1733-S	BSM-1700 Transport Monitor with 3 MP Masimo SpO ₂

ACCESSORIES

Standard Accessories for BSM-1700 series

PRODUCT #	ITEM
JC-906PA	Patient Cable, 10 ft
BR-913PA	3 Lead Block, Snap Type
YN-901P	NIBP Cuff Hose, Adult
YP-713T	Adult NIBP Cuff
YP-712T	Child NIBP Cuff
SB-170P	Battery

Optional Accessories for BSM-1700 Monitors

PRODUCT #	ITEM
SC-170R/ZA	BSM-1700 Docking Station for AC power and Networking for network laser printer and interbed communications
RY-910PA	Remote Controller
SB-170P	Replacement Battery (one is included with BSM-1700)



OPTIONAL ADD-ONS

Wireless Communications Options

PRODUCT #	ITEM
QI-170PA	Wireless LAN Station Kit for BSM-1700, 802.11A/B/G <ul style="list-style-type: none"> • Requires BSM-1700 v01.15 or later • Installation charge for area to be covered by wireless system #INSTALL-WLAN

Bedside Monitor Accessories

ECG Accessories

PRODUCT #	ITEM
BR-903PA	3-Lead Block, Clip Type
BR-913PA	3-Lead Block, Snap Type
BR-906PA	6-Lead Block, Clip Type
BR-916PA	6-Lead Block, Snap Type
BJ-900PA	12-Lead (10 Electrode) Patient Cable
A/ECG-N-ADVT	Neonatal 3 Lead ECG Cable, Requires Individual ECG Leads

Nihon Kohden SpO₂ Accessories

Only available for monitors equipped with Nihon Kohden SpO₂ technology.

PRODUCT #	ITEM
JL-900P	Nihon Kohden SpO ₂ Connection Cable
TL-201T	Reusable SpO ₂ Finger Probe
TL-220T	Reusable SpO ₂ Adult/Pediatric Multi-site Probe, 3 kg or more
TL-052S	Semi-Disposable Adult/Neonatal SpO ₂ Probe (Box of 5)
TL-062S	Semi-Disposable Pediatric SpO ₂ Probe (Box of 5)
TL-271T3	Disposable Adult Nihon Kohden SpO ₂ Probe (Box of 24)
TL-272T3	Disposable Pediatric Nihon Kohden SpO ₂ Probe (Box of 24)
TL-273T3	Disposable Neonate/Adult Nihon Kohden SpO ₂ Probe (Box of 24)
TL-274T3	Disposable Infant Nihon Kohden SpO ₂ Probe (Box of 24)
A/SPO2-ADVT	Reusable Nihon Kohden SpO ₂ SoftTip Finger Probe
JL-500P1	Smart Cable Dual Nihon Kohden SpO ₂ (not available for BSM-3500)

For additional sensors, see the Patient Monitoring Supplies & Accessories catalog (MMLB 193).

BSM-1700 Mounting Options

PRODUCT #	ITEM
DZ-170P	Bed Rail Hook for BSM-1700
DH-170P-S	Mounting Plate and Clamp to put BSM-1700 on IV Pole (only for BSM-1700 not SC-170R, no power or network)
A/0056-16	Wall Mount Adaptor Plate for SC-170R (required to put monitor on arm)
SC-170R-KIT/ZA	Mounting Plate and Clamp to put a BSM-1700 and an SC-170R on IV Pole <ul style="list-style-type: none"> Includes: wall mount adaptor (A/0056-16), pole clamp and mounting plate

External Device Options

PRODUCT #	ITEM
YJ-910P	ECG/BP Smart Output Cable, 5 m, End is Unterminated
YJ-920P	ECG/BP Smart Output Cable, 0.3 m, Dual ¼" Jacks (ECG/BP Output Cables connect directly to the Input Unit)

Masimo SpO₂ Accessories

Only available for monitors equipped with Masimo SpO₂ technology.

PRODUCT #	ITEM
JL-630P	Masimo LNOP SpO ₂ Connection Cable, 10 ft
JL-631P	Masimo LNCS SpO ₂ Connection Cable, 10 ft
JL-632P	Masimo RD SpO ₂ Connection Cable, 10 ft
JL-639P	Dual Masimo SpO ₂ Smart Cable for BSM-6000 Series/Life Scope G9 (not available for BSM-3500)
A/1897	Masimo Disposable SpO ₂ Probes (Set of 3) • Note: If a reusable probe is needed, order probe directly from Masimo.

Note: Additional disposable and non-disposable probes are available for purchase from the vendor.

Nellcor SpO₂ Accessories

Only available for monitors equipped with Nellcor SpO₂ technology.

PRODUCT #	ITEM
JL-650P	Nellcor SpO ₂ Connection Cable
A/MAXPAC	Nellcor Disposable SpO ₂ Probes (Set of 3) • Note: If a reusable probe is needed, order a DS-100A reusable probe directly from Nellcor.

Note: Additional disposable and non-disposable probes are available for purchase from the vendor.

EEG Pod and Accessories

EEG Pod not available for BSM 3500 and BSM-1700

PRODUCT #	ITEM
AE-918P	EEG Pod, Patient Monitoring • Provides continuous monitoring for up to eight channels of EEG • Connects via the Multi-link socket and is intended to monitor brain function • Amplifies, digitizes and analyzes the patient data, displaying the EEG waveform and analysis on the patient monitor • Includes plate adaptor, holder guide, screws and 14-in cable
AE-918P-N/ZA	EEG Pod Accessory Kit, Neonate, 2ch • Includes JE-905P, BE-910P, A/ELEFIX-SAMPLE, A/SKINPURE-SAMPLE, A/106, A/505, A/POUCH-JE922, A/AEEGRuler-T, A/AEEGRULER-S and A/QRG-AEEG
A/0055-62	DAU BOTTOM PLATE MOUNT FOR AE-918 EEG POD, Optional mounting for DAU configurations (G9)
A/0059-01	DOWN POLE CLAMP FOR AE-918 EEG MODULE, Optional mounting for down pole configurations (BSM-6000)
BM-918B	EXTENSION CABLE AE-918P extension cable for BSM-6000
AE-918P-MD/ZA	EEG Pod Accessory Kit, Adult Medium, 10ch • Includes JE-906P, NE-114A, A/ELEFIX-SAMPLE, A/SKINPURE-SAMPLE, A/108, A/505 and A/POUCH-JE922
AE-918P-LG/ZA	EEG Pod Accessory Kit, Adult Large, 10ch • Includes JE-906P, NE-114A, A/ELEFIX-SAMPLE, A/SKINPURE-SAMPLE, A/108, A/505 and A/POUCH-JE922

BIS Monitoring Accessories

PRODUCT #	ITEM
NK-ASPECT-BISX	BIS processor and Smart Modular connection cable.

Note: Additional disposable and non-disposable probes are available for purchase from the vendor.

Oridion® Microstream™ Pod Monitoring Accessories

Oridion Microstream Pod Monitoring not available for BSM 1700

PRODUCT #	ITEM
RS03000/ZA	<p>Oridion MicroStream etCO₂ Pod Kit</p> <p>The MicroStream Pod is based on the side-stream method, where a sample of exhaled breath is aspirated from the breathing circuit to a sensor residing inside the “Pod.” etCO₂ measurements are displayed on a connected G9, BSM-6000 or BSM-3500 monitor.</p> <p>(Requires BSM-3500 and BSM-6000 to be equipped with an interface board.)</p> <ul style="list-style-type: none"> • Includes Pod, interface cable clamp mount and sample pack • The Pod is not compatible with BSM-1700 series monitors • Additional sample lines can be purchased from Medtronic at 800-962-9888 • Alternatively, the customer can also contact the local Medtronic sales manager

NIBP Accessories

PRODUCT #	ITEM
YN-921P	NIBP Neonatal Hose, 3.5 m
YN-900P	NIBP Air Hose 1.5 m
YN-901P	NIBP Air Hose 3.5 m
YN-990P	Extension Air Hose 1.5 m
YP-710T	Reusable NIBP Cuff Infant for 8 – 13 cm limb
YP-711T	Reusable NIBP Cuff Small Child for 13 – 18 cm limb
YP-712T	Reusable NIBP Cuff Child for 18 – 23 cm limb
YP-713T	Reusable NIBP Cuff Adult for 23 – 33 cm limb
YP-714T	Reusable NIBP Cuff Large Adult for 33 – to 45 cm limb
YP-715T	Reusable NIBP Cuff Thigh for 45 – 55 cm limb
#QP-038P	iNIBP option for BSM-3500 series monitor

For additional cuffs, see the Patient Monitoring Supplies & Accessories catalog (MMLB 193).

Invasive Pressure Accessories

PRODUCT #	ITEM
JP-900P	IBP Smart Connection Cable, 10 ft, for P-23XL1, P-10EZ1 and Becton Dickinson (Ohmeda®) Disposable Transducers
JP-910P	IBP Smart Connection Cable, 1 ft, with Nihon Kohden Connector (Same Connector as AP-800PA Module)
JP-920P	IBP Smart Connection Cable, 10 ft, for Edwards Lifesciences Transducers

Use connection cables for invasive lines if JP910 is purchased. A JP910 requires the extension cable from a transducer vendor such as: Edwards Lifesciences, Ohmeda (GE Medical), ICU Medical, Medex™ (Smith Medical), Argon®, Arrow™, Bio Sensors International, Hospira and many others. Hospitals are responsible for contacting and obtaining the cable prior to going live.

Cardiac Output Accessories

PRODUCT #	ITEM
JT-950P	<p>Cardiac Output Smart Cable</p> <ul style="list-style-type: none"> • Contact Becton Dickinson for inline sensors and ice bath probes at 888.237.2762

CO₂ Accessories

PRODUCT #	ITEM
TG-920P	<p>^{cap}-ONE®, CO₂ Smart Cable for Non-Intubated and Intubated mainstream applications.</p> <ul style="list-style-type: none"> • Measurement is taken directly at the location of expired CO₂
YG-111T	^{cap} -ONE® TG-920P CO ₂ Intubated Airway Adaptor (Box of 30)
YG-122T	^{cap} -ONE® TG-920P CO ₂ Non-Intubated with O ₂ Adaptor (Box of 30)
TG-970P	<p>^{cap}-ONE®, CO₂ Smart Cable for Non-Intubated and Intubated mainstream applications. Measurement is taken directly at the location of expired CO₂</p>
TG-980P	<p>^{cap}-ONE®, CO₂ Smart Cable for Non-Intubated and Intubated mainstream applications.</p> <ul style="list-style-type: none"> • Measurement is taken directly at the location of expired CO₂

CO₂ Accessories (Continued)

PRODUCT #	ITEM
YG-211T	CO ₂ Intubated Adult Airway Adaptor, for TG-970P/TG-980P (Box of 30) <ul style="list-style-type: none"> • For pediatric and adult patients over 7 kg
YG-213T	CO ₂ Intubated Neonatal Airway Adaptor W/I-C, TG-970P/TG-980P (Box of 30) <ul style="list-style-type: none"> • For neonatal patients below 7 kg • Includes inner connector to reduce dead space • Cannot be used with breathing circuit connectors that have an inner connector
YG-214T	CO ₂ Intubated Neonatal Airway Adaptor WO/I- C, TG-970P/TG-980P (Box of 30) <ul style="list-style-type: none"> • For neonatal patients below 7 kg • Does not include an inner connector to reduce dead space • Must be used with breathing circuit connectors that have an inner connector
YG-232T	Pediatric etCO ₂ Mask for TG-970P/TG-980P (Box of 10)
YG-242T	Infant etCO ₂ Mask for TG-970P/TG-980P (Box of 10)
YG-272T	Adult etCO ₂ Mask for TG-970P/TG-980P (Box of 10)
YG-282T	Adult Large etCO ₂ Mask for TG-970P/TG-980P (Box of 10)
YG-227T	BiteBlock, Adult ^{cap} -ONE® (Box of 20)

Temperature Accessories

PRODUCT #	ITEM
A/11-CA-400-12	Temperature Adaptor Cable, ¼" Dia <ul style="list-style-type: none"> • Connects a YSI-400 series temperature probe to a Nihon Kohden bedside monitor
A/10-1550-040	Esophageal Stethoscope Temperature Probe, 18FR <ul style="list-style-type: none"> • YSI-400 series compatible • Box of 40

Temperature Accessories (Continued)

PRODUCT #	ITEM
A/10-1610-040C	General Purpose Temperature Probe, 9FR <ul style="list-style-type: none"> • For nasopharyngeal, esophageal, auxiliary, or rectal temperature measurement • YSI-400 series compatible • Box of 40
A/10-1600-030	Skin Temperature Sensor, 1" Dia <ul style="list-style-type: none"> • For neonatal, pediatric, and adult patients • Rapid response YSI-400 series compatible • Box of 30
JT-900P	Dual Temperature Smart Cable <ul style="list-style-type: none"> • YSI-400 Series compatible • Note: Two temperature connectors are built in. Order only if 3 or 4 connectors are required.

Note: Additional disposable and non-disposable probes are available for purchase from the vendor.

Thermistor Respiration Accessories

PRODUCT #	ITEM
TR-900P	Thermistor Respiration Smart Cable and Nasal Pickup
TR-910P	Thermistor Respiration Smart Cable and Flow through Pickup
YG-001P	Flow through Airway Adaptor

Anesthesia Gas Monitoring Module

Nihon Kohden provides agent monitoring capabilities that integrate directly to our operating room monitoring products and provide a comprehensive solution for OR monitoring requirements.

GF-210RA Multi-Gas Unit

Innovative Anesthesia Monitoring Solutions

The GF-210RA Multi-Gas Unit connects to our BSM-6000 and BSM-9000 series monitors to provide a complete anesthesia monitoring solution.

The GF-210RA Multi-Gas Unit provides you with quick and accurate measurement of anesthesia gases including CO₂, N₂O, O₂, up to two anesthetic agents (automatically selected from Halothane, Isoflurane, Enflurane, Sevoflurane, Desflurane) and respiration rate.

Quick access windows display five waveforms (O₂, CO₂, N₂O and two agents) with easy-to-view numerical data color-coded to match each waveform; comprehensive graphic trends of all parameters; a tabular data list that gives you minute-by-minute values of all anesthetic agents, gases and vital signs; and a user-selectable alarm for all parameters.



GF-210RA Multi-Gas Unit

FEATURES

- Automatic identification of five anesthetic agents
- Displays inspired and expired O₂, CO₂, N₂O and two agents
- Quick warm up
- Adult and neonatal anesthesia monitoring
- Automatic self-zero calibration
- User-friendly touchscreen operation



COMPLETE KIT – STANDARD ACCESSORIES INCLUDED

PRODUCT #	ITEM
GF-210RA	Multi-Gas Unit for BSM-6000, BSM-3500, and G9 <ul style="list-style-type: none"> • Anesthesia gas detection system for use with the BSM-6000, BSM-3500, and G9 series monitors. • Displays 5 waveforms, 2 agents inspired and expired O₂, CO₂, and N₂O. Side stream measurement with automatic self-zero calibration. All controls and information are available at the bedside monitor. • Includes a power cord, Operators Manual and 1 exhaust gas adaptor

Note: Requires a sample line, water trap and interface cable listed below to connect to BSM-6000, BSM-35xxA-QI, or CSM-1901 monitor. When connecting to a BSM-6000, a QI-632P, QI-634P, QI-671P or QI-672P interface card must also be quoted. BSM-3500 series monitor requires models equipped with the QI option. No additional options are required for CSM-1901. It can be connected to a G9 Core unit or DAU interface ports.

ACCESSORIES

Optional Accessories for GF-210RA

PRODUCT #	ITEM
YJ-600P	Connection Cable, 0.3 m, for use only when GF-210RA is mounted to the bottom of the BSM-6000
YJ-601P	Connection Cable, 2.5 m, for use with BSM-3500, BSM- 6000 and CSM-1901
YG-600P	Multi-Gas Watertrap (Box of 12)
A/8290286	Multi-Gas Sampling Line (Box of 10)
6144900614B	Exhaust Gas Tube



Mounting Accessories for GF-210RA

PRODUCT #	ITEM
DH-220P	Mounting Plate to connect GF-210RA to the bottom of the BSM-6000 series monitor <ul style="list-style-type: none"> • Use YJ-600P connection cable for this configuration
A/0060-01	Mounting Plate to connect GF-210RA to the bottom of the BSM-3500 monitor Use YJ-601P connection cable for this configuration. (BSM-35x2A-QI/ZA only)
DH-221P	Wall Mount Adaptor to mount the GF-210RA vertically on a wall channel
A/0031-16	Mounting Adaptor Plate to mount the GF-210RA on a mounting arm

Gas Testing Accessories

Nihon Kohden does not stock the following gas testing accessories. They are available directly from Scott Medical Products at 800.233.4334.

PRODUCT #	ITEM
0304-7068SR-SD	<ul style="list-style-type: none"> • Test Gas Replacement Cylinder
0305-NKCALKIT	Test Kit

Capnography

OLG-3800 Respiratory Monitor

Mainstream Capnography and SpO₂ Monitoring
Portable Respiratory Mainstream CO₂ Monitoring for Intubated and Non-intubated Patients

With 7" color touch screen, you get easy reliable access to respiratory monitoring status. It's the key to providing safe and effective care — from a patient under sedation during a procedure to monitoring a patient on the general care floor. With a combination of cap-ONE® capnography and Nihon Kohden SpO₂ pulse oximetry technologies. Continuous monitoring of etCO₂, respiration rate, and SpO₂. In virtually any clinical setting. It brings certainty where it matters most.

FEATURES

- Large configurable display for waveform and numeric display
- CO₂, SpO₂ and respiration measurement
- Quick CO₂ measurement start with no sensor calibration needed
- EtCO₂ cues for intuitive care
- Audible cues for intuitive respiratory care
- Compact design with high-resolution color touch screen
- AC and Battery operation for portable use
- Patient data can quickly be retrieved for up to 120 hours with trend and full disclosure smart graphics
- Two Smart Cable ports for cap-ONE® and SpO₂ sensors
- Connect to Central Station or use inter-bed for enhanced remote viewing





COMPLETE KITS – STANDARD ACCESSORIES INCLUDED

PRODUCT #	ITEM
OLG-3800C/ZA	Monitor and Oximeter Kit - Capnograph, SpO ₂ Monitor, Kit Note: This Oximeter kit includes SpO ₂ Smart Cable, power cord, manual and battery. SpO ₂ sensor is ordered separately.
OLG-3800B/ZA	Monitor Capnography and Oximeter Kit - Capnography, CO ₂ and SpO ₂ Monitor, Kit. Note: This Capnography kit includes a TG-920P ^{cap} -ONE® CO ₂ sensor, SpO ₂ Smart Cable, power cord, manual and battery. SpO ₂ sensor is ordered separately.
OLG-3800A/ZA	Endoscopy Package, Monitor Capnography Sensor and SpO ₂ for use with Biteblock - Capnograph, CO ₂ and SpO ₂ Monitor, GI Kit Note: This Capnography kit includes a TG-980P ^{cap} -ONE® CO ₂ sensor, SpO ₂ Smart Cable, power cord, manual, battery and TL-201T SpO ₂ sensor.

OLG-3800 Respiratory Monitor

PRODUCT #	ITEM
OLG-3800A	<p>Portable CO₂ monitor with a 7" color display. The monitor has two Smart Cable connectors, one for ^{cap}-ONE® CO₂ sensors (TG-980P, TG-970P or TG-920P) and one for the Nihon Kohden SpO₂ Smart Cable (JL-500P1). Patient data review capabilities include up to 120 hours of vital sign data, Trend Graph/Table, Alarm, and full-disclosure review.</p> <p>The OLG-3800 can be connected via the LAN port to a Nihon Kohden network and provide functions as inter-bed, EMR connectivity and central monitoring. Includes an operator's manual and power cord.</p>

Note: Sensors and cables required for monitoring CO₂ and SpO₂ parameters are sold separately. Battery is sold separately.

Optional Accessories for OLG-3800 Monitor

PRODUCT #	ITEM
TG-920P	^{cap} -ONE®, CO ₂ Smart Cable for Non-Intubated and Intubated mainstream applications. Measurement is taken directly at the location of the expired CO ₂ breath
TG-980P	^{cap} -ONE®, CO ₂ Smart Cable for Non-Intubated and Intubated mainstream applications. Measurement is taken directly at the location of the expired CO ₂ breath
JL-500P1	Smart Cable for Nihon Kohden SpO ₂ (required for pulse oximetry functionality)
A/OLG-2800A-CABLE	Analog out interface cable
SB-170P	Battery for up to 5 hours of use

Nihon Kohden SpO₂ Accessories

PRODUCT #	ITEM
TL-201T	Reusable SpO ₂ Finger Probe
TL-220T	Reusable SpO ₂ Adult/Pediatric Multi-site Probe, 3 kg or more
TL-052S	Semi-Disposable Adult / Neonatal SpO ₂ Probe (Box of 5)
TL-062S	Semi-Disposable Pediatric SpO ₂ Probe (Box of 5)
TL-271T3	Disposable Adult Nihon Kohden SpO ₂ Probe (Box of 24)
TL-272T3	Disposable Pediatric Nihon Kohden SpO ₂ Probe (Box of 24)
TL-273T3	Disposable Neonate/Adult Nihon Kohden SpO ₂ Probe (Box of 24)
TL-274T3	Disposable Infant Nihon Kohden SpO ₂ Probe (Box of 24)
A/SPO2-ADVT	Reusable Nihon Kohden SpO ₂ SoftTip Finger Probe

For additional sensors, see the Patient Monitoring Supplies & Accessories catalog (MMLB 193).

CO₂ Accessories

PRODUCT #	ITEM
YG-111T	cap-ONE® TG-920P CO ₂ Intubated Airway Adaptor (Box of 30)
YG-122T	cap-ONE® TG-920P CO ₂ Non-Intubated with O ₂ Adaptor (Box of 30)
YG-211T	TG-970P/TG-980P CO ₂ Intubated Adult Airway Adaptor (Box of 30) • For pediatric and adult patients over 7 kg
YG-213T	TG-970P/TG-980P CO ₂ Intubated Neonatal Airway Adaptor W/I-C (Box of 30) • For neonatal patients below 7 kg • Includes inner connector to reduce dead space • Cannot be used with breathing circuit connectors that have an inner connector
YG-214T	TG-970P/TG-980P CO ₂ Intubated Neonatal Airway Adaptor WO/I- C (Box of 30) • For neonatal patients below 7 kg • Does not include an inner connector to reduce dead space • Must be used with breathing circuit connectors that have an inner connector
YG-232T	etCO ₂ Mask for TG-970P/TG-980P - Pediatric (Box of 10)
YG-242T	etCO ₂ Mask for TG-970P/TG-980P - Infant (Box of 10)
YG-272T	etCO ₂ Mask for TG-970P/TG-980P - Adult (Box of 10)
YG-282T	etCO ₂ Mask for TG-970P/TG-980P - Adult Large (Box of 10)
YG-227T	BiteBlock, Adult cap-ONE® (Box of 20)



Central Station

It's vital that clinicians are able to quickly and accurately assess and document a patient's condition, in real time. Our Central Station systems provide comprehensive information to caregivers, while enhancing workflow as part of our total monitoring system.



CNS-6801A



CNS Remote Client





CNS-6801A Central Patient Monitoring System

The CNS-6801 Central Patient Monitoring System is a full-featured system that provides comprehensive patient monitoring and review. Simple-to-use and scalable, the CNS-6801 monitors up to 32 patients using two displays and is ideal for telemetry, critical care, OR, emergency room, and other monitoring environments. The CNS-6801 also provides data storage and review capabilities, and ensures a complete patient record by facilitating automated patient and data transfer between multiple departments. Standard features include Arrhythmia detection, full disclosure, graphic and tabular trends, ST review, Diagnostic 12-lead ECG storage, archiving and send waveform to EMR.

FEATURES

- Up to 32 patients per system
- Arrhythmia recall review
- Full disclosure review
- 12-lead ECG review
- Graphical and tabular trends
- Report generation

COMPLETE KITS – STANDARD ACCESSORIES INCLUDED

CNS-6801A CENTRAL STATIONS

PRODUCT #	ITEM
CNS-6801-8-S	8 Patient Central Monitoring System
CNS-6801-16-S	16 Patient Central Monitoring System
CNS-6801-24-S	24 Patient Central Monitoring System
CNS-6801-32-S	32 Patient Central Monitoring System

ACCESSORIES

Standard Accessories for CNS-6801 Series

PRODUCT #	ITEM
PU-681RA	CNS-6801A Main Unit (up to 32 patients)
A/24-CANVYS	24" LCD Touchscreen Display
WS-960P-01A	Recorder Unit
SC-611RA	Power Supply Kit for Recorder
658111A	PS2 Keyboard
YL-611P	Alarm Indicator for Primary Display, 2.5 m
A/615-10074-0001	Alarm Indicator Base
YS-097P5	LCD Primary Display Cable, 2.5 m
A/ABCE422-11MED	Uninterruptible Power Supply
A/CPUSTAND	CPU Stand
A/MOUSE-USB	Mouse
A/MOUSE-PAD	Mouse Pad

Standard Accessories for CNS-6801-24/32-S Only

PRODUCT #	ITEM
A/24-CANVYS	24" LCD Touchscreen Display (System has 2 displays)
YS-113P8	LCD Secondary Display Cable, 2.5 m
YS-098P1	Alarm Indicator for Secondary Display, 2.5 m
A/615-10074-0001	Alarm Indicator Base

Upgrade for CNS-6801A Series

PRODUCT #	ITEM
CNS-6801-EXP-16	8 to 16 Patient Expansion for CNS-6801
CNS-6801-EXP-24/ZA	16 to 24 Patient Expansion for CNS-6801
CNS-6801-EXP-32	24 to 32 Patient Expansion for CNS-6801

These are incremental upgrades. If a customer has an 8-bed system and wants to expand to a 24-bed system, they must purchase both the NK-CNS-16 and NK-CNS-24 expansions. Expansion from a 16-bed system to a 24-bed system requires a secondary LCD display, which is included in these prices. Installation charges are added if Nihon Kohden must install the second display. If additional beds are being added to the system, appropriate installation charges apply.

Optional Accessories for CNS-6801A Series

PRODUCT #	ITEM
A/FQW-50-2-100	Recording Paper (Box of 10)
A/BARCODE	Bar Code Scanner
RY-910PA	Remote Controller
CNS-6801-DUAL	Dual Display Option <ul style="list-style-type: none"> Includes 24" LCD display, 2nd Display Cable Set, and 2nd Display Alarm Indicator for CNS-6801-8/16-S only Provides dual displays for a CNS-6801 Central Station A second display can be configured as a split screen. Patients monitored on the CNS can be displayed on each screen or the second screen can be configured as a review screen. Dual display cannot be use as a slave display
CNS-6801-5M	5 m Display Cable Kit for Primary Display <ul style="list-style-type: none"> Replaces 2.5 m long YS-097P5 and YL-611P with 5 m long cables Does not extend recorder cable, mouse, or keyboard
CNS-6801-5M-2	5 m Display Cable Kit for Secondary Display <ul style="list-style-type: none"> Replaces 2.5 m YS-113P8 and YS-098P1 with 5 m long cables Does not extend recorder cable, mouse, or keyboard
A/HP-M608dn	HP Network Laser Jet Printer (OEM warranty only), no discounting and non-commission item

CNS Remote Client

Optional Accessories for CNS-6801A Series (continued)

PRODUCT #	ITEM
CNS-NIR-24S/ZA	<p>Non-interactive remote display system for the CNS-6801A Central System Primary Display</p> <ul style="list-style-type: none"> • Provides a duplicate video display of the primary display at a remote location up to a maximum of 300 ft away • Includes one 24-in LCD display and video transmitter/receiver system • A total of up to eight additional displays (one basic and seven expansions) can be added using part number CNS-NIR-24EXP/ZA • No additional installation charges when installed as part of a hardwired or telemetry system • All components are covered by OEM warranty only
CNS-NIR-24D/ZA	<p>Non-interactive remote display system for the CNS-6801A Central System Secondary Display</p> <ul style="list-style-type: none"> • Provides a duplicate video display of the secondary display at a remote location up to a maximum of 300 ft away • Includes one 24-in LCD display and video transmitter/receiver system • A total of up to eight additional displays (one basic and seven expansions) can be added using part number CNS-NIR-24EXP/ZA • No additional installation charges when installed as part of a hardwired or telemetry system • All components are covered by OEM warranty only
CNS-NIR-24EXP/ZA	<p>Non-interactive remote display system for the CNS-NIR-24S/ZA or CNS-NIR-24D/ZA</p> <ul style="list-style-type: none"> • Adds one additional remote display to the basic non-interactive remote display system up to a maximum of 300 ft away from the host system • A total of up to eight additional displays (one basic and seven expansions) can be added to a single CNS-6801A system for display • No additional installation charges when installed as part of a hardwired or telemetry system • All components are covered by OEM warranty only



PRODUCT #	ITEM
A/NK-HIQ-RNS-RSF	<p>There is a one-time professional service fee to deploy the CNS Remote Client Extension (server-side software) and corresponding CNS Remote Client. The CNS Remote Client works in conjunction with the CNS. All functions that can be performed on a CNS for a remotely filled bed can be performed on a CNS remote client, with the additional benefits of Send to EMR, admit, discharge and transfer. The CNS remote client requires the NK-HiQ Enterprise Gateway. The CNS remote client comes with a 24-in LCD and built-in PC, keyboard and mouse, and can monitor 16 beds. The CNS remote client is covered by a two-year warranty.</p>
RNS-6803/ZA RNS-6804/ZA (NO AUDIO)	<p>16-Bed CNS Remote Client (hardware included)</p> <p>The CNS remote client works in conjunction with the CNS. All functions that can be performed on a CNS for a remotely filled bed can be performed on a CNS remote client, with the additional benefits of Send to EMR, admit, discharge and transfer. The CNS remote client requires the NK-HiQ Enterprise Gateway. The CNS remote client comes with a 24-in LCD and built-in PC, keyboard and mouse, and can monitor 16 beds. The CNS remote client is covered by a two-year warranty.</p>

Telemetry

Nihon Kohden's telemetry transmitters are ideal for patients that require ambulatory monitoring. With the industry's most robust line of wireless transmitters, we can help protect your entire patient population, regardless of acuity level or location.



Life Scope® G3 Series



GZ-140P



ZM-520/530



Life Scope® G3 Series

Ambulation has long been accepted as an essential part of recovery in a hospital that may decrease the length of stay and improve outcomes. Unfortunately, ambulation can be hindered by the need to ensure continuous patient monitoring.

The Life Scope G3 series of patient monitors offers the best of all worlds: A specialty patient monitor that can be used to stabilize a patient in place, if needed, with a compact design that allows for ease of movement.

Available with three levels of functionality, the Life Scope G3 delivers early progressive ambulation in a smart, safe and secure package:

SMART

- True WiFi capabilities for safe patient monitoring
- Maintains a comprehensive patient record with up to 15-minute data backfill in the event of wireless coverage loss
- Automatically switches to local monitoring mode during WiFi coverage loss

SAFE

- Premium-as-standard philosophy; all devices are fully featured, including arrhythmia analysis and full disclosure
- Helps detect falls and wandering with a proprietary algorithm
- Enables expansion of ambulatory monitoring throughout the hospital

SECURE

- Complies with current wireless security protocols, including 802.1X and WPA2 Enterprise with AES encryption and EAP authentication
- Seamless integration with the hospital enterprise system, with authorized access to data on the Nihon Kohden network
- Software upgrades and security updates included for the life of the equipment



GZ-120P

GZ-130P

GZ-140P

G3 Telemetry Monitoring

PRODUCT #	ITEM
GZ-120P	Wireless ECG and Respiration Telemeter
GZ-130P	Wireless ECG, Respiration and SpO ₂ Telemeter
GZ-140P	Wireless ECG, Respiration, SpO ₂ and NIBP Telemeter (must be sold with Nihon Kohden NIBP cuffs)

Note: All G3 Telemeters will come standard with a strap and manuals CD. Lead sets, NK SpO₂ probes and NIBP cuffs are purchased separately. Batteries are not included. The GZ-140P will come standard with the YS-112P4 reusable pouch and the YN-981S air hose.

OPTIONAL ADD-ONS

G3 ECG Lead Set Options

PRODUCT #	ITEM
BR-903PA	3 Lead ECG Block, Clip Type
BR-906PA	6 Lead ECG Block, Clip Type
BR-913PA	3 Lead ECG Block, Snap Type
BR-916PA	6 Lead ECG Block, Snap Type

G3 SpO₂ Optional Add–Ons for GZ-130P & GZ-140P

PRODUCT #	ITEM
TL-201T	Reusable Nihon Kohden Finger Probe
TL-220T	Reusable Nihon Kohden Adult/Pediatric Multi-site Probe, ≥3 kg
TL-052S	Semi-disposable, Adult/Neonatal Nihon Kohden SpO ₂ Probe (Box of 5)
TL-062S	Disposable, Pediatric Nihon Kohden SpO ₂ Probe (Box of 5)
TL-271T3	Disposable Adult Nihon Kohden SpO ₂ Probe (Box of 24)

G3 SpO₂ Optional Add–Ons for GZ-130P & GZ-140P (Continued)

PRODUCT #	ITEM
TL-272T3	Disposable Pediatric Nihon Kohden SpO ₂ Probe (Box of 24)
TL-273T3	Disposable Neonate/Adult Nihon Kohden SpO ₂ Probe (Box of 24)
TL-274T3	Disposable Infant Nihon Kohden SpO ₂ Probe (Box of 24)
A/SPO2-ADVT	Reusable Nihon Kohden SoftTip Finger Probe
TL-535U	Semi-disposable Neonatal Nihon Kohden Probe (Box of 5), requires JL-030U2

G3 NIBP Optional Add–Ons for GZ-140P

PRODUCT #	ITEM
YS-112P4	Reusable Pouch, GZ-140
YN-981S	Air Hose for GZ-140, 0.8m
YP-710T	Reusable NIBP Cuff - Infant for 8 to 13 cm limb
YP-840T	Disposable NIBP Cuff - Infant for 8 to 13 cm limb
YP-711T	Reusable NIBP Cuff - Child for 13 to 18 cm limb
YP-841T	Disposable NIBP Cuff - Child for 13 to 18 cm limb
YP-712T*	Reusable NIBP Cuff - Small Adult for 18 to 23 cm limb
YP-842T*	Disposable NIBP Cuff - Small Adult for 18 to 23 cm limb
YP-713T*	Reusable NIBP Cuff - Adult for 23 to 33 cm limb
YP-843T*	Disposable NIBP Cuff - Adult for 23 to 33 cm limb
YP-714T*	Reusable NIBP Cuff - Large Adult for 33 to 45 cm limb
YP-844T*	Disposable NIBP Cuff - Large Adult for 33 to 45 cm limb
YP-715T*	Reusable NIBP Cuff - Thigh for 45 to 55 cm limb
YP-845T*	Disposable NIBP Cuff - Thigh for 45 to 55 cm limb

Note: *Can be used for inflation method measurement (iNIBP)

ZM Telemetry Monitoring

Allows for monitoring of up to eight vectors of ECG and respiration at the Central Monitor. Integrated 2.2" color screen displays continuous real-time waveform and vital signs, and provides data review with 10 minutes of full disclosure waveforms and 10 minutes of vital sign data. The display also indicates lead status and battery status. The transmitter operates in the protected WMTS frequency band and provides economical operation through the use of two alkaline "AA" batteries.

FEATURES

- Full five-year parts and labor warranty
- Transmitters operate for up to three days using two or three "AA" alkaline batteries
- Low-battery warning sound and indicator lamp on each transmitter
- Call button can activate recorder and nurse call at central monitor (ZM-520/521PA and ZM-530/531PA only)
- Can use either a three-electrode (for single-vector ECG monitoring) or six-electrode (for eight-vector ECG monitoring) patient cable
- All transmitters monitor ECG and impedance respiration
- Lead-off indicators on each transmitter indicate which lead requires attention
- Automatic data integration to your electronic charting system using the CGS-9002 HL7 Gateway System



RECEIVERS

PRODUCT #	ITEM
ORG-9100A-8	8 Patient Receiver Cabinet
ORG-9100A-6	6 Patient Receiver Cabinet
ORG-9100A-4	4 Patient Receiver Cabinet

Note: WMTS GHz Telemetry Receivers connects to CNS-6201A and CNS-9701A central station network to allow for the reception of up to 8 telemetry patients. Channels can be assigned to multiple central stations and requires ZM-500 series transmitters.

Optional Add-Ons for ORG-9100A Series:

PRODUCT #	ITEM
ZR-920PA-X2	Upgrade 4-bed system to 6-bed system or 6-bed system to 8-bed system
ZR-920PA-X4	Upgrade 4-bed system to 8-bed system

Telemetry Transmitter ZM-520/521PA and ZM-530/531PA

Allows monitoring of up to eight vectors of ECG, SpO₂ and respiration at the Central Monitor. Integrated 2.2" color screen displays continuous real-time waveform and vital signs, and provides data review with 10 minutes of full disclosure waveforms and 10 minutes of vital sign data. The display also indicates lead status, battery status and pulse strength. The transmitter operates in the protected WMTS frequency band and provides economical operation through the use of two alkaline "AA" batteries.



Telemetry Transmitter ZM-540/541PA

Allows for monitoring of up to eight vectors of ECG, respiration, continuous SpO₂ and NIBP at the Central Monitor. NTX is designed to provide hospitals with more flexible monitoring on higher-acuity patients. Ergonomically designed to provide patient comfort and mobility, it bridges the gap between a traditional bedside monitor and an ambulatory transmitter.

The NTX allows hospitals to safely monitor higher-acuity patients while maintaining the flexibility, comfort and mobility associated with the ambulatory patient. Integrated 2.2" color screen displays continuous real-time waveform and vital signs, and provides data review with 10 minutes of full disclosure waveforms and 10 minutes of vital signs data. The display also indicates lead status, battery status and pulse strength. The NTX transmitter operates in the protected WMTS frequency band and provides economical operation through the use of three alkaline "AA" batteries.



FEATURES

- Full five-year parts and labor warranty
- Transmitters operate for up to three days using two or three “AA” alkaline batteries
- Low-battery warning sound and indicator lamp on each transmitter
- Call button can activate recorder and nurse call at central monitor (ZM-520/521PA and ZM-530/531PA only)
- Can use either a three-electrode (for single-vector ECG monitoring) or six-electrode (for eight-vector ECG monitoring) patient cable
- All transmitters monitor ECG and impedance respiration
- Lead-off indicators on each transmitter indicate which lead requires attention
- Automatic data integration to your electronic charting system using the GS-9002 HL7 Gateway System

WMTS 608 MHz UHF Telemetry Transmitters

PRODUCT #	ITEM
ZM-520PA	ECG, 8 Vectors, and Respiration Transmitter
600343B	Transmitter Strap
ZM-530PA	ECG, 8 Vectors, Respiration, and SpO ₂ Transmitter
600343B	Transmitter Strap
ZM-540PA	ECG, 8 Vectors, NIBP, Respiration, and SpO ₂ Transmitter
YP-503P	Adult NIBP Cuff and Transmitter holder, ZM-540PA
Y236	Transmitter Strap

Note: Transmitters do not include batteries, lead sets or SpO₂ probes.

WMTS L-BAND, 1.4 GHz Telemetry Transmitters

PRODUCT #	ITEM
ZM-521PA	ECG, 8 Vectors and Respiration Transmitter
600343B	Transmitter Strap
ZM-531PA	ECG, 8 Vectors, Respiration, and SpO ₂ Transmitter
600343B	Transmitter Strap
ZM-541PA	ECG, 8 Vectors, NIBP, Respiration, and SpO ₂ Transmitter
YP-503P	Adult NIBP Cuff and Transmitter holder, ZM-540PA
Y236	Transmitter Strap

Note: Transmitters do not include batteries, lead sets or SpO₂ probes.

ACCESSORIES

Optional Accessories for Transmitters

PRODUCT #	ITEM
A/NTX-DISP	Disposable Pouch for ZM-540PA (Box of 100) • Requires NIBP hose and cuff for NIBP measurement
A/NTX2-POUCH	Reusable Telemetry Transmitter Pouch for ZM-540PA • Requires NIBP hose and cuff for NIBP measurement
A/SPO2-cap	Protective SpO ₂ Cap, ZM530/531PA

ECG Accessories

PRODUCT #	ITEM
BR-903PA	3 Lead Block, Clip Type
BR-913PA	3 Lead Block, Snap Type
BR-906PA	6 Lead Block, Clip Type
BR-916PA	6 Lead Block, Snap Type

NIBP Accessories ZM-540PA and ZM-541PA

PRODUCT #	ITEM
YP-504P	Large Adult NIBP Cuff and Transmitter Holder, ZM-540PA
YN-990P	NIBP Hose to use Standard Cuffs with ZS/ZM-940P, 1.5 m
YP-710T	Reusable NIBP Cuff – Infant for 8 to 13 cm limb
YP-711T	Reusable NIBP Cuff – Small Child for 13 to 18 cm limb
YP-712T	Reusable NIBP Cuff – Child for 18 to 23 cm limb
YP-713T	Reusable NIBP Cuff – Adult for 23 to 33 cm limb
YP-714T	Reusable NIBP Cuff – Large Adult for 33 to 45 cm limb
YP-715T	Reusable NIBP Cuff – Thigh for 45 to 55 cm limb

SpO₂ Accessories ZM-530PA/ZM-531PA, ZM-540PA and ZM-541PA

PRODUCT #	ITEM
TL-201T	Reusable Nihon Kohden SpO ₂ Finger Probe
TL-220T	Reusable Nihon Kohden SpO ₂ Adult/Pediatric Multi-site Probe, 3 kg or more
TL-052S	Semi-Disposable Adult/Neonatal Nihon Kohden SpO ₂ Probe (Box of 5)
TL-062S	Semi-Disposable Pediatric Nihon Kohden SpO ₂ Probe (Box of 5)
TL-271T3	Disposable Adult Nihon Kohden SpO ₂ Probe (Box of 24)
TL-272T3	Disposable Pediatric Nihon Kohden SpO ₂ Probe (Box of 24)
TL-273T3	Disposable Neonate/Adult Nihon Kohden SpO ₂ Probe (Box of 24)
TL-274T3	Disposable Infant Nihon Kohden SpO ₂ Probe (Box of 24)
A/SPO2-ADVT	Reusable Nihon Kohden SpO ₂ SoftTip Finger Probe

NK-HiQ™ Platform & Server Extensions

NK-HiQ™ Enterprise Gateway

HL7 Server Extension

Wireless Assessment, Installation & Server Extension

AWARE® Alarm Management and Reporting

ViTrac® Server Extension

NetKonnnect Gateway

ReportKonnnect

PAGER Server Extension

ECG Server Extension



NK-HiQ™ Enterprise Gateway

The NK-HiQ Enterprise Gateway is a next-generation platform that empowers healthcare professionals to deliver uncompromising care by integrating data from multiple Nihon Kohden patient monitoring devices and allowing easy access to information, regardless of location. As the backbone of the Nihon Kohden Patient Monitoring System, the NK-HiQ Enterprise Gateway consolidates multiple applications into a single, powerful server — saving time, space and money.

NK-HiQ™ Enterprise Gateway is designed to support seven key gateway extensions and applications, all through one server:

- AWARE® alarm management and reporting software application
- NK-HiQ™ CNS Remote Client
- NK-HiQ™ ECG Server Extension
- NK-HiQ™ HL7 Server Extension
- NK-HiQ™ Pager Server Extension
- NK-HiQ™ Wireless Server Extension
- ViTrac® remote viewing

FEATURES

A client/server-based platform, the NK-HiQ™ Enterprise Gateway:

- Supports up to 2,000 devices and 300 clients for remote viewing
- Features multilevel security controls, restricting access to patient data based on user access privileges and specified groups
- Allows for easy setup of users and access rights, providing administrators the necessary flexibility and robustness to meet their requirements

PRODUCT #	ITEM
NK-HIQ-EG/ZA	There is a one-time fee that includes server hardware and the NK-HiQ Enterprise platform software. NK-HiQ Enterprise platform software is required to run any of the NK-HiQ Enterprise applications or plug-ins.
NK-HIQ-EGTEST/ZA	Test Server for NK-HiQ Enterprise Gateway

HL7 Server Extension

The NK-HiQ HL7 Server Extension is designed to facilitate automated transfer of information from Nihon Kohden patient monitors to hospital information systems. The NK-HiQ HL7 Server Extension has been developed to:

- Provide outbound vital signs from a Nihon Kohden patient monitoring system to almost any HL7-compliant EMR system
- Simplify patient admission and help ensure accuracy of patient demographics using inbound ADT capability
- Use an integrated interface engine that enables the easy exchange of electronic information with HL7-compliant EMR systems

Part of the NK-HiQ Enterprise Gateway platform, the NK-HiQ HL7 Server Extension includes all the software, hardware and professional services necessary to facilitate the transfer of patient admission, discharge, transfer data (ADT) and vital signs results messages between Life Scope® patient monitors and almost any HL7-compliant EMR system.

PRODUCT #	ITEM
A/HL7-PSF	HL7 Server Extensions to Information Systems <ul style="list-style-type: none"> • The HL7 Gateway system connects up to 50 Nihon Kohden monitoring devices (not the number of patients) to a compatible hospital information system • Compatible systems include Meditech Magic, McKesson®, Cerner®, CPSI and others • Includes hardware, software, integration tools, and professional services to support HL7 results and ADT communication between the Nihon Kohden monitoring system and the hospital information system • Does not include dual feed nor send ECG snippets to EMR
A/HL7-PSF-PE	<ul style="list-style-type: none"> • The HL7 Gateway system connects up to 50 Nihon Kohden monitoring devices (not the number of patients) to a compatible hospital information system • Compatible systems include Meditech Magic, McKesson®, Cerner®, CPSI and others • Includes hardware, software, integration tools, and professional services to support HL7 results and ADT communication between the Nihon Kohden monitoring system and the hospital information system. • Includes dual feed and sends ECG snippets to EMR

HL7 SUBSCRIPTION	
#HL7-SAAS	Annual subscription fee for HL7 interface, per device
#HL7-SAAS-II	Annual subscription fee for HL7 interface, per device; includes dual feed and support from the HL7 interface team
#HL7-SAAS-III	Annual subscription fee for HL7 interface, per device; includes send ECG snippets to EMR, dual feed, and support from the HL7 interface team

HL7 PERPETUAL	
#HL7-P	Perpetual license for HL7 interface, per device
#HL7-P-II	Perpetual license for HL7 interface, per device; includes dual feed and support from the HL7 interface team
#HL7-P-III	Perpetual license for HL7 interface, per device; includes send ECG snippets to EMR, dual feed, and support from the HL7 interface team

Wireless Assessment, Installation & Server Extension

Designed to facilitate data acquisition and management throughout a hospital, the NK-HiQ Wireless Server Extension enables Nihon Kohden WLAN patient monitors to leverage a hospital’s WiFi infrastructure investment or operate on a stand-alone Nihon Kohden wireless network in a smart, safe and secure manner.

Offering true WiFi for continuous monitoring, the NK-HiQ Wireless Server Extension:

- Enables expansion of telemetry monitoring throughout the hospital, which promotes patient ambulation, a critical factor that may decrease the length of stay and improve outcomes¹
- Offers complete and continuous data collection even during transport, which can be one of the most dangerous times for critically ill patients²
- Leverages 802.11 infrastructure, vastly reducing the cost of deployment³

Part of the NK-HiQ Enterprise Gateway platform, the NK-HiQ Wireless Server Extension includes all required software to allow for wireless transfer of information between Life Scope® monitoring devices and the Central Station.

PRODUCT #	ITEM
#Install-WLAN-NK	Installation of WLAN system; includes system supplies, design, installation, technical and clinical qualification
#Adv-Net-Sol	Price to design, install and configure advanced network solution
A/WIRELESS-PSF	One-time professional service fee to deploy Wireless Server Extension on NK-HiQ Enterprise Gateway

WIRELESS SUBSCRIPTION	
#WIRELESS-SAAS	Annual subscription fee for Wireless Server Extension

WIRELESS PERPETUAL	
#WIRELESS-P	Perpetual license for Wireless Server Extension

Note: Square footage of desired coverage area for patient monitoring is needed for a budgetary quote.

Use the Hospital’s WLAN Network*

PRODUCT #	ITEM
#WIRELESS-WLAN-HN	Installation of WLAN system, includes system supplies, design, installation, technical and clinical qualification

Note: Hospital’s WLAN Network needs to meet Nihon Kohden’s performance requirements for the system to be deployed. If the network meets these requisites, the network configuration will be documented in the Network Agreement. The Network Agreement must be signed before go-live. If the hospital’s WLAN doesn’t meet Nihon Kohden wireless patient monitoring requirements, remediation will be recommended. Remediation may require the hospital to upgrade existing network at their own expense or installing a dedicated Nihon Kohden WLAN network (needs to be quoted).

Square footage of desired coverage area for patient monitoring is needed for a budgetary quote.

AWARE® Alarm Management and Reporting

According to The Joint Commission, improperly managed alarms can compromise patient safety. Nihon Kohden recognizes that eliminating alarm fatigue is a shared responsibility between hospitals, clinicians and monitoring companies. As your ally in health, we have developed AWARE alarm management and reporting, a software application designed to assist clinical teams in identifying, managing and responding to critical alarms.

The AWARE application assists hospitals by producing insightful reports with quantitative data related to arrhythmia, vital signs and technical alarms, which can:

- Assist in identifying and eliminating nuisance alarms, allowing healthcare professionals to focus on patient care
- Aid hospitals in achieving The Joint Commission’s national patient safety goals on alarm management
- Promote meaningful alarm management across the organization

Part of the NK-HiQ™ Enterprise Gateway platform, the AWARE system includes all required software to track, aggregate, segment and analyze alarms emitted by Life Scope® patient monitors.

AWARE requires the NK-HiQ™ Enterprise Gateway server hardware (Dell® R640) and Microsoft SQL Standard, which are included with the bill of materials for each of the kits listed in the following tables. The Aware system is based upon the total number of patients monitored with Nihon Kohden devices (both bedside monitors and telemetry) and is available for the configurations below. The server includes the Aware Server Extension, Microsoft SQL Standard, NK-HiQ™ Enterprise Gateway S/W, Dell® R640 Server H/W, mouse and keyboard.

AWARE Server Extension

PRODUCT #	ITEM
A/AWARE-PSF	One-time professional service fee to deploy Aware Alarm Management on the NK-HiQ Enterprise Gateway

SUBSCRIPTION	
#AWARE-SAAS	Annual subscription fee for Aware Alarm Management, devices 0 through 100
#AWARE-SAAS-II	Annual subscription fee for Aware Alarm Management, devices 101 through 500
#AWARE-SAAS-III	Annual subscription fee for Aware Alarm Management, devices 501 through 2000

PERPETUAL	
#AWARE-P	Perpetual license for Aware Alarm Management, devices 0 through 100
#AWARE-P-II	Perpetual license for Aware Alarm Management, devices 101 through 500
#AWARE-P-III	Perpetual license for Aware Alarm Management, devices 501 through 2000

QS-110P AWARE Gateway Clinical Services

A nurse executive is available to provide on-site consultation to nursing leadership and guidance on clinical settings and alarms based on the data that is generated from the Aware system. An initial clinical consultation and training are automatically associated and quoted with the Aware Gateway Sever. Clinical Optimization Specialist for Gateway Software is available for up to 2000 monitored beds.

PRODUCT #	ITEM
#CAE-INIVISIT-100	Training for up to 100 monitored beds. Initial Clinical Consultation and Training <100 monitoring devices
#CAE-INIVISIT-250	Training for up to 250 monitored beds. Initial Clinical Consultation and Training <250 monitoring devices
#CAE-INIVISIT-500	Training for up to 500 monitored beds. Initial Clinical Consultation and Training <500 monitoring devices
#CAE-INIVISIT-750	Training for up to 750 monitored beds. Initial Clinical Consultation and Training <750 monitoring devices
#CAE-INIVISIT- 1000	Training for up to 1000 monitored beds. Initial Clinical Consultation and Training <1000 monitoring devices
#CAE-INIVISIT- 2000	Training for up to 2000 monitored beds. Initial Clinical Consultation and Training <2000 monitoring devices

Note: Follow-up consultation services are available as an option (see Clinical Support Section).



ViTrac® Server Extension

ViTrac (QP-989P) in conjunction with NK-HiQ™ Enterprise Gateway (QP-988P) supports the remote access of patient data using Apple iOS products, including iPad®, iPhone® and iPod Touch®. The ViTrac system allows hospitals to assign access rights to clinicians who can remotely access the monitoring data. ViTrac is similar to the Nihon Kohden NetKonnnect product by providing users with the ability to view current waveforms and vital signs, then review stored data, including graphical and tabular trends, arrhythmia recall events, ST segment history, full disclosure waveforms and hemodynamic calculations. A new feature of ViTrac is the ability to view up to 12 patients at one time on an iPad or 8 patients (by scrolling) on an iPhone or iPod Touch in comparison to NetKonnnect, which only provided a single patient view. Data can be accessed wirelessly from within the hospital or remotely using hospital-provided connection methods.

The ViTrac system includes server hardware and ViTrac server software with the ability to register a specific number of users. For example, on a 25-user system, the hospital can register 25 users who can access data remotely. The client software (QP-989P) for the Apple® user devices is available as a free download from the Apple App Store.

Hardware is covered by the original manufacturer’s warranty.



QP-988P ViTrac on the NK-HiQ Enterprise Gateway

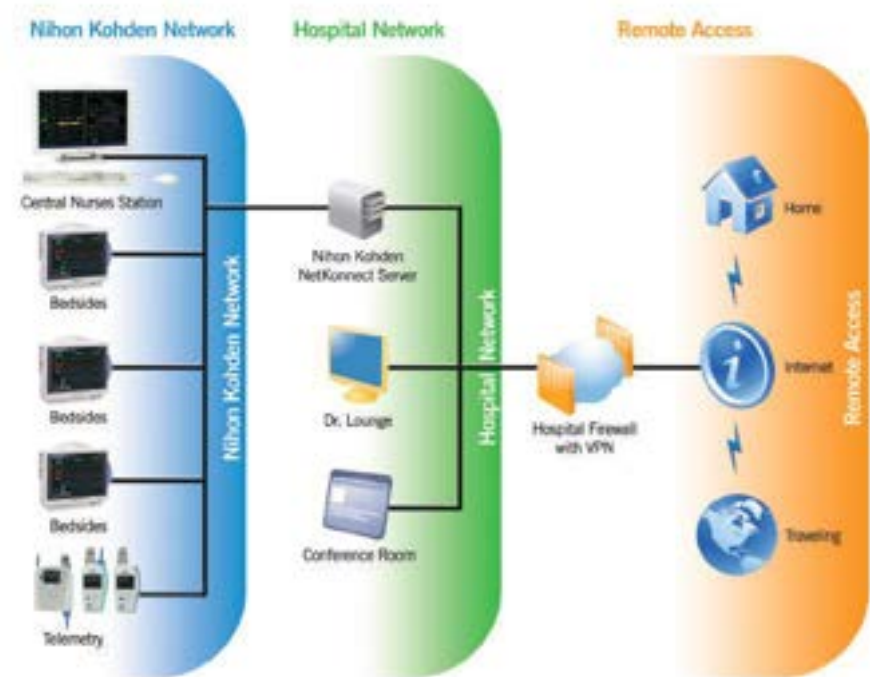
PRODUCT #	ITEM
A/VITRAC-PSF	One-time implementation fee to deploy ViTrac

SUBSCRIPTION	
#VITRAC-SAAS	Annual SAAS (on premise) fee for ViTrac, devices 0 through 100
#VITRAC-SAAS-II	Annual SAAS (on premise) fee for ViTrac, devices 101 through 500
#VITRAC-SAAS-III	Annual SAAS (on premise) fee for ViTrac, devices 501 through 2000

PERPETUAL	
#VITRAC-P	Perpetual license for ViTrac, devices 0 through 100
#VITRAC-P-II	Perpetual license for ViTrac, devices 101 through 500
#VITRAC-P-III	Perpetual license for ViTrac, devices 501 through 2000

NetKonnnect Gateway

The QP-983P NetKonnnect Remote Access Server provides a secure portal between the Nihon Kohden Patient Monitoring System and your hospital's network. Customers can use most web-enabled computers to access this data both locally and remotely. Only authorized users can access this data. Requires Internet Explorer 5.1 or later and Net Framework 1.1 or later.



ReportKonnnect

ReportKonnnect measures the quality of a customer's patient monitoring practice and assists in reducing sentinel events in monitored clinical areas. Reported parameters include the total number of alarmed events, alarm off episodes, arrhythmia off episodes, total minutes of leads off, duration of low battery events, total number of signal off events and telemetry alarm response time. Reports can be sorted for all patients, individual units, or individual patients.

PRODUCT #	ITEM
A/BS-983P	ReportKonnnect Monitoring Quality Reporting Software <ul style="list-style-type: none"> • Add-on software for NetKonnnect Remote Data Access system • Allows individual NetKonnnect users to be assigned access rights to view and print "Quality of Monitoring Reports" that track key monitoring quality parameters, such as leads off, alarm response times, etc. • Requires NetKonnnect Remote Data Access system version 02-02 software

PRODUCT #	ITEM
QP-983P-S	NetKonnnect Gateway, 5 users <ul style="list-style-type: none"> • Five users can be registered and simultaneously access patient data remotely • Includes Dell Authentication Server PC hardware and NetKonnnect software • Annual software support agreement is available
BS-982P	NetKonnnect Gateway, 1000 User Expansion <ul style="list-style-type: none"> • Increases total number of registered users to 1,000 • Number of simultaneous access users is 255 • Requires NetKonnnect (QP-983P-S)

PAGER Server Extension

Designed to improve alarm response and workflow, the NK-HiQ Pager Server Extension forwards alarm and arrhythmia notifications to third-party communication devices. The server extension allows for alarm notifications to be sent to the appropriate clinicians via mobile devices, supporting a timely response to actionable alarms.

Created to help hospitals and health systems achieve their alarm management and safety plans, as required by The Joint Commission’s national patient safety goals, the NK-HiQ Pager Server Extension alarm information includes:

- Patient name
- Patient ID
- Room number/name
- Alarm violation type
- Vital signs
- Waveform image

Part of the NK-HiQ Enterprise Gateway platform, the NK-HiQ Pager Server Extension includes all the software to allow alarm information for the entire monitoring system to be forwarded to a third-party alarm notification controller system.

The Pager Server Extension enables alarm notification directly to the clinician using portable devices. With a single point connection to the Nihon Kohden monitoring network, alarm information from all patients is captured and forwarded to a third-party alarm controller system.

Pager Server Extension General Description

- Interface to connect a Nihon Kohden monitoring system to a third-party alarm notification controller system (such as Ascom™, Globestar, etc.) for remote alarm and event notification using pagers, smart devices and the nurse call system
- Interface transmits alarm information and arrhythmia event waveforms to the third-party alarm notification controller system
- Requires purchase of the third-party alarm notification controller system directly from the vendor of that system
- For secondary alarm notification only
- Installed on the NK-HiQ Enterprise Gateway Platform, included as part of A/PAGER-PSF

PRODUCT #	ITEM
A/PAGER-PSF	One time implementation fee to deploy Pager Server Extension on NK-HiQ Enterprise Gateway
PAGER SUBSCRIPTION	
#PAGER-SAAS	Annual SAAS (on premise) fee for Pager interface, devices 0 through 100
#PAGER-SAAS-II	Annual SAAS (on premise) fee for Pager interface, devices 101 through 500
#PAGER-SAAS-III	Annual SAAS (on premise) fee for Pager interface, devices 501 through 2000
PAGER PERPETUAL	
#PAGER-P	Perpetual license for Pager interface, devices 0 through 100
#PAGER-P-II	Perpetual license for Pager interface, devices 101 through 500
#PAGER-P-III	Perpetual license for Pager interface, devices 501 through 2000

ECG Server Extension

Designed to improve monitoring accessibility, the NK-HiQ ECG Server Extension receives diagnostic-quality 12-lead ECG waveform data directly from bedside monitors when a test is complete and stores it for up to 72 hours for retrieval.

The latest in data management integration, the NK-HiQ ECG Server Extension:

- Captures interpretive 12-lead ECGs performed on compatible Life Scope® bedside monitors and forwards them to the appropriate application using Nihon Kohden’s ECG format
- Translates ECG data into the host system’s native format and transfers them to the host system
- Allows translated ECGs to be seen and handled by the host system as if they originated on their own proprietary devices, and may be stored, recalled, edited and printed just like any other ECG in the host system

Part of the NK-HiQ Enterprise Gateway platform, the NK-HiQ ECG Server Extension includes all software, hardware and professional services necessary to facilitate the transfer of 12-lead ECG data between Life Scope® patient monitors and the hospital data management system

ECG Server Extension

The ECG Server Extension sends 12-Lead ECGs to MUSE, Tracemaster® and other ECG Data Management Systems. The Extension is installed on the NK-HiQ Enterprise Gateway Platform and included as part of ECG-PSF or ECG-PSF-RED.

PRODUCT #	ITEM
A/ECG-PSF	Perpetual implementation fee to deploy the ECG Server Extension

ECG SUBSCRIPTION	
#ECG-SAAS	Annual SAAS (on premise) fee for ECG Sever Extension, devices 0 through 100
#ECG-SAAS-II	Annual SAAS (on premise) fee for ECG Sever Extension, devices 101 through 500
#ECG-SAAS-III	Annual SAAS (on premise) fee for ECG Sever Extension, devices 501 through 2000

ECG PERPETUAL	
#ECG-P	Perpetual license for ECG Sever Extension, devices 0 through 100
#ECG-P-II	Perpetual license for ECG Sever Extension, devices 101 through 500
#ECG-P-III	Perpetual license for ECG Sever Extension, devices 501 through 2000

Nihon Kohden ECG Server Extension is a software product that transfers 12-lead ECG waveform data from a Nihon Kohden Bedside Monitor to third-party ECG Management Systems.

- The ECG Server Extension for the Nihon Kohden Enterprise Gateway platform

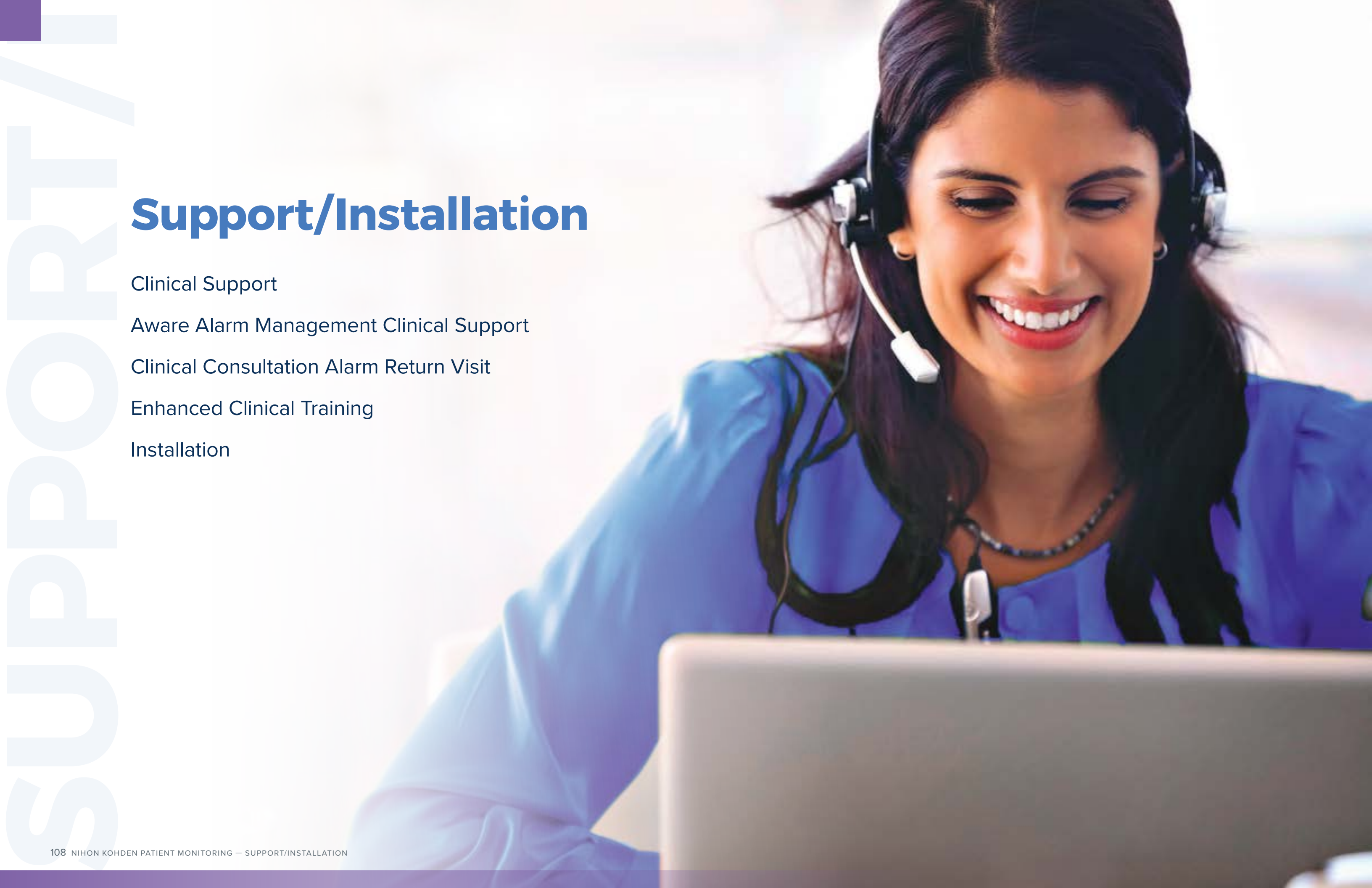
The hospital must also purchase a Middleware Data Med-FT software package from Engineering Solutions (engs.com or 800.601.3361).

- One server system allows up to 1,000 BSM-3500, BSM-6000 or Life Scope G9

Bedside monitors transmit interpretive 12-lead ECGs directly to the ECG data management system.

- The ECG Server then processes and stores the 12-Lead Analysis data in a pre-configured Windows®
- Share location for up to 72 hours until the data is imported by the ECG Management Systems

Includes ECG Server Extension, Enterprise Gateway S/W, Dell R640 Server H/W, mouse and keyboard



SUPPORT/

Support/Installation

Clinical Support

Aware Alarm Management Clinical Support

Clinical Consultation Alarm Return Visit

Enhanced Clinical Training

Installation

Clinical Support

Nihon Kohden recognizes that clinical education is crucial to ensuring long-term satisfaction with your new monitoring system. We achieve this goal by forming a clinical partnership with the hospital and educating staff using a four-part blended learning approach.

Our blended learning approach consists of a value added four-part clinical implementation program:

1. Access to Nihon Kohden University for virtual equipment training powered by HealthStream®
2. Live hands-on clinical resource training classes for 20% of the staff receiving NK monitoring equipment
3. Live clinical application support during the transition to the new monitoring system
4. Ongoing free 24/7 clinical and/or technical phone support.

Our value-added four-part clinical implementation program is included with the system purchase. On-site support is included for the initial implementation. Access to Nihon Kohden University's virtual equipment training experience is available at no charge for the life of the product.

CLINICAL SUPPORT

PRODUCT #	ITEM
#INSTALL-SA-2DY	Clinical Support for Stand Alone Systems INSTALL-SA Clinical Support for Stand Alone Systems per day, (T, W, or Th) with a two-day minimum
#INSTALL-SA	Clinical Support for Stand Alone Systems INSTALL-SA Clinical Support for Stand Alone Systems per week, per CAS (T, W, or Th)
#ONSITE-SU	Onsite Clinical Education, Training and Support for Software upgrades per CAS per week software upgrades per CAS per week (T, W, Th)
#CLINICAL-OPT	Provides clinical follow-up or optimization visits approximately 3-6 months after go-live of Nihon Kohden Monitoring systems. The clinical optimization visit includes a review of clinical settings and configurations.
#CAS-RUSH	Provides on-site training and go-live support for Nihon Kohden customers less than 90 days from PO (M, T, W, Th). This premium service is in addition to any existing Clinical charges
#CLINICAL-RETRAIN	Provides on-site retraining for existing and active Nihon Kohden patient monitoring customers. Includes up to nine classes (T, W, Th)
#CLINICAL-DELAY	Charges assessed for customer-initiated delays in scheduled clinical training and go-live support after the agreed upon terms set forth in the kick-off call
#CAS-WE	Onsite Clinical Weekend CAS-WE Onsite Clinical Support Weekend PER SHIFT per CAS (F, Sa, or Su)
#CAS - NIGHT	Onsite Clinical Weekday Night CAS-NIGHT Onsite Clinical Support PER WEEKDAY night per CAS (T, W, or Th) to cover hours between 22:00 to 07:00
#CAS-WE-NIGHT	Onsite Clinical Weekend Night CAS-NIGHT Onsite Clinical Support PER WEEKEND night per CAS (F, S, or Su) to cover hours between 22:00 to 07:00
CLINICAL-EDNN	Clinical Partnership Program for Non-Networked Systems (week days)
CLINICAL-EDDM	Clinical Partnership Program for Defensive Monitoring Systems (week days)
CLINICAL-ED	Clinical Partnership Program for Networked & Non-networked Monitoring System
#Clin IM-SU	Clinical Application Support for existing Implementation and Troubleshooting of Clinical Monitoring Systems and Gateway Server Products- Approval Required

Clinical Optimization

Provides clinical follow-up or optimization visit approximately 3-6 months after go-live of Nihon Kohden Monitoring systems.

The clinical optimization visit includes review of clinical settings and configurations, additional clinical resource classes, and 8 accredited courses powered by Healthstream, via Nihon Kohden University. 12 lead ECG Interpretation, Identifying and Managing Cardiac Arrhythmias, ECG-ST Segment Monitoring for the Identification of Ischemia, Injury or Infarction, Methods of Invasive and Non-Invasive Hemodynamic Monitoring, Practice Standards for EKG, QT Interval Monitoring to Prevent Sudden Cardiac Death, EEG Monitoring in the ICU, EEG Monitoring in the NICU, End Tidal CO₂, Alarm Sounds, and Nihon Kohden Dimensions- Augmented Reality Lead Placement, Augmented Reality Arrhythmia.

Clinical Assessment

A nurse executive will work with hospital leaders to understand their clinical, quality, and financial goals as well as objectives. A formal presentation and deliverables will be provided post assessment.

PRODUCT #	ITEM
#CLINICAL-Assest1	Standard Clinical Assessment for accounts with up to 50 beds
#CLINICAL-Assest2	Standard Clinical Assessment for accounts with between 51-150 beds
#CLINICAL-Assest3	Standard Clinical Assessment for accounts with between 151-300 beds
#CLINICAL-Assest4	Standard Clinical Assessment for accounts with between 301-500 beds
#CLINICAL-Assest5	Standard Clinical Assessment for accounts with between 501-750 beds
#CLINICAL-Assest6	Standard Clinical Assessment for accounts with between 751-1000 beds
#CLINICAL-Assest7	Standard Clinical Assessment for accounts with more than 1000 beds



AWARE® Alarm Management Clinical Support

Clinical Consultation Alarm Visit, Initial Visit:

A nurse executive visit provides on-site consultation to nursing leadership and guidance on clinical settings and alarms based on data that is generated from AWARE® Alarm Reports and established hospital policy. Hospital biomed staff need to make setting changes across departments as directed by hospital administration. Initial review and training on the Aware software application occur after installation. The date for an initial visit and review will be scheduled with the clinical contact post installation, approximately 30 to 45 days after Aware implementation to ensure that there is sufficient data for the consultation.

Note: Consultation must be quoted with system

PRODUCT #	ITEM
#CAE-INVISIT-100	Initial Alarm Consultations and Training - up to 100 monitoring devices • Initial Clinical Consultation and Training <100 monitoring devices
#CAE- INVISIT-250	Initial Alarm Consultations and Training - up to 250 monitoring devices • Initial Clinical Consultation and Training <250 monitoring devices
#CAE- INVISIT-500	Initial Alarm Consultations and Training - up to 500 monitoring devices • Initial Clinical Consultation and Training <500 monitoring devices
#CAE- INVISIT-750	Initial Alarm Consultations and Training - up to 750 monitoring devices • Initial Clinical Consultation and Training <750 monitoring devices
#CAE- INVISIT-1000	Initial Alarm Consultations and Training - up to 1000 monitoring devices • Initial Clinical Consultation and Training <1000 monitoring devices
#CAE-INVISIT-2000	Initial Alarm Consultations and Training - up to 2000 monitoring devices • Initial Clinical Consultation and Training <2000 monitoring devices

Clinical Consultation Alarm Return Visit

A Clinical Alarm Consultation Return Visit for hospitals is available as an optional service. A Nurse Executive will provide an on-site consultation to nursing leadership and guidance on clinical settings and alarms based on data generated from Aware reports and established hospital policy. Hospital biomed staff will need to make setting changes across departments as directed by hospital administration.

PRODUCT #	ITEM
#CAE-RTNVISIT-100	Training for up to 100 monitored beds • Return Visit Clinical Consultation and Training <100 monitoring devices
#CAE- RTNVISIT-250	Training for up to 250 monitored beds • Return Visit Clinical Consultation and Training <250 monitoring devices
#CAE- RTNVISIT-500	Training for up to 500 monitored beds • Return Visit Clinical Consultation and Training <500 monitoring devices
#CAE- RTNVISIT-750	Training for up to 750 monitored beds • Return Visit Clinical Consultation and Training <750 monitoring devices
#CAE- RTNVISIT-1000	Training for up to 1000 monitored beds Return Visit Clinical Consultation and Training <1000 monitoring devices
#CAE-RTNVISIT-2000	Training for up to 2000 monitored beds • Return Visit Clinical Consultation and Training <2000 monitoring devices

Enhanced Clinical Training

Our standard 4-part clinical training program includes up to 5 classes during a 1 week install/go-live and up to 12 classes per week for a multi-week install/go-live. Enhanced Clinical training provides additional clinical resource classes and go-live support beyond our standard Clinical Partnership program.

PRODUCT #	ITEM
#CLINICAL-ENH-1	Enhanced Clinical Training- 1 additional CAS to provide training or support over and above standard (4) part program
#CLINICAL-ENH-2	Enhanced Clinical Training- 2 additional CAS to provide training or support over and above standard (4) part program
#CLINICAL-ENH-3	Enhanced Clinical Training- 3 additional CAS to provide training or support over and above standard (4) part program
#CLINICAL-ENH-4	Enhanced Clinical Training- 4 additional CAS to provide training or support over and above standard (4) part program

Installation

Installation charges reflect that clinical is not included. A Clinical stand-alone is quoted separately for stand-alone installations requiring or requesting clinical support.

PRODUCT #	ITEM
#INSTALL-System	System Installation Charge <ul style="list-style-type: none"> • Basic installation charge for hardwired, telemetry and WLAN systems • Charge is per individual department to be installed • For example, installation of an ICU, telemetry and ER system requires three system installation charges
#INSTALL-HW	Hardwired Bedside Installation Charge <ul style="list-style-type: none"> • Per bed cost for each location where a hardwired connection for bedside is required
#INSTALL-NET-CON	Network Connection Installation Charge <ul style="list-style-type: none"> • Charge for additional network drops or connection • These additional network connections may be needed where the number of locations to connect bedside monitors exceeds the number of monitors to be installed, special runs to connect laser printers, etc.
#INSTALL-WMTS	Telemetry Antenna System Installation Charge <ul style="list-style-type: none"> • WMTS Telemetry antenna system installation • Installation charges are based on actual square footage of the coverage area
#INSTALL-WLAN	WLAN Installation Charge <ul style="list-style-type: none"> • Installation charges for WLAN coverage area • Installation charges are based on actual square footage of the coverage area
#INSTALL-LABOR	Installation Labor Charges <ul style="list-style-type: none"> • Hourly labor charge for custom installation work, minimum 4 hours
#INSTALL-G9-SETUP	Life Scope G9 Bedside Set Up Fee <ul style="list-style-type: none"> • Basic Set Up Fee for networked or hardwired Life Scope G9 systems • Change is per individual G9 unit to be installed



MMLB 269 [B]-CO-2549

Exceptional Solutions, Simply Delivered is a trademark of Nihon Kohden.

^{cap}ONE®, Early Detection, Notification System, Prefense, Tracemaster and Smart Cable are trademarks of Nihon Kohden Corporation.

ViTrac is a registered trademark of NKUS Lab, a subsidiary of Nihon Kohden Corporation.

Apple, iPad, iPhone, and iPod Touch are registered trademarks of Apple, Inc.

Ascom is a trademark of Ascom Holding AG.

Canvys is a registered trademark of Richardson Electronics.

Carefusion, AVEA and VELA are registered trademarks of BD.

Cerner is a registered trademark of Cerner Innovation.

Covidien & Nellcor are registered trademarks of Covidien, Medtronic, and Cardinal Health.

Dell is a registered trademark of Dell, Inc.

Edwards Lifesciences, Vigilance, Vigilance II, and Edwards are registered trademarks of Edwards Lifesciences Corporation.

GE, Asiys, Avance, Aespire, Engstrom, and Ohmeda are registered trademarks of The General Electric Company.

HealthStream is a registered trademark of HealthStream, Inc.

Hospira is a registered trademark of Hospira, Inc.

Maquet Servo-I and Servo-s are registered trademarks of Maquet.

Masimo, Radical, Radical-7 and Rad-8 are registered trademarks of Masimo Corporation.

McKesson is a registered trademark of McKesson Corporation.

Microstream, N-600x, Oridion, and Oxi-Max are trademarks of Covidien, Medtronic, and Cardinal Health.

Primus, Primus Infinity, Apollo, Pallas, Fabius, Babylog 800 Plus, Evita Infinity, Evita 2 Dura, Fabius GS, Fabius Tiro, and Oxylog are registered trademarks of Dräger.

Pulsion Medical System PiCCO-Technology Monitor PiCCO Plus/PiCCO₂ are registered trademarks of Pulsion Medical Systems.

Puritan Bennett is a trademark of Medtronic.

Q-View is a trademark of Hospira, Inc.

Tracemaster is a registered trademark of Schonstedt Instrument Company.

Windows is a registered trademark of Microsoft Corporation.

Other trademarks may be covered by trademark owners other than noted herein.



For more information, please
contact us at **1-800-325-0283**
or visit **us.nihonkohden.com**



MMLB 269 [B]-CO-2549

Exceptional Solutions,
Simply Delivered.™