

# NK NETWORK CARE<sup>SM</sup> SERVICE PROGRAM

COMPLETE CARE FOR YOUR NETWORK SYSTEMS



Maintaining and securing your network is essential for a hospital or health system. Not only does it help protect essential information, but it can also ensure that critical patient monitors are operating correctly.

But the various systems needed to support this work are often patched together from different companies. And when the IT team needs assistance integrating the systems with existing hardware and software, they must call multiple companies for a solution.

At Nihon Kohden, we believe there should be a better way. That's why we have developed NK Network Care, an all-inclusive solution that bundles critical network maintenance and security systems together and helps you maximize your network systems.

## THE NK NETWORK CARE DIFFERENCE

01. Network Management System (**NMS**)
02. Security Information and Event Management (**SIEM**)
03. Network Threat Appliance (**NTA**)

NK Network Care offers NMS, SIEM and NTA from leading companies in an all-in-one solution. All three platforms have already been tested and vetted to ensure they work harmoniously with Nihon Kohden hardware and software. And best of all, if you have an issue with any one of them, Nihon Kohden will help you resolve it—all with one quick call.

## NK NETWORK CARE BENEFITS

01. Maximum Results — Each system is fully integrated without impacting performance or functionality of your monitoring equipment
02. Complete Solution — Receive NTA, NMS and SIEM capabilities from top companies in one solution
03. Trusted Security — Maintain safe, secure environment with trusted software
04. Real-time Access — Ensure up-to-date information on the status and security of your hardware and software
05. Faster Resolution — Proactively identify and resolve issues before you are even aware of it with limited impact on resources

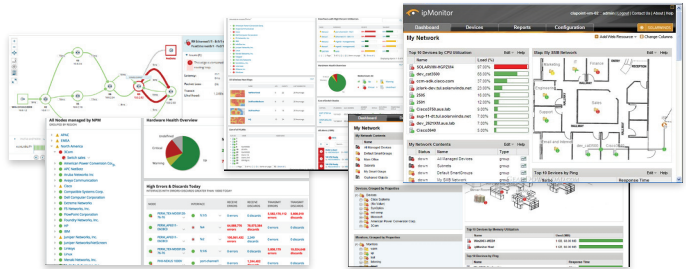
# NK NETWORK CARE OFFERS YOU ALL OF THE SYSTEMS YOU NEED — NMS, SIEM AND NTA — TO MONITOR, MAINTAIN AND SECURE YOUR NETWORK.

## NETWORK MANAGEMENT SYSTEMS (NMS)

A system designed for monitoring, maintaining and optimizing a network. The NMS may detect aspects of a network where throughput is nearing the bandwidth available.

### NMS OFFERS:

- 01. Network monitoring
- 02. Device detection
- 03. Performance analysis
- 04. Device management
- 05. Fault management

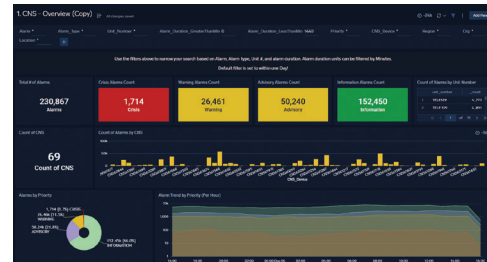


## SECURITY INFORMATION AND EVENT MANAGEMENT (SIEM)

Gives enterprise security professionals both insight into and a track record of activities within their IT environment.

### SIEM OFFERS:

- 01. Threat monitoring
- 02. Event correlation
- 03. Incident response
- 04. Extensive compliance reporting
- 05. Forensics capabilities

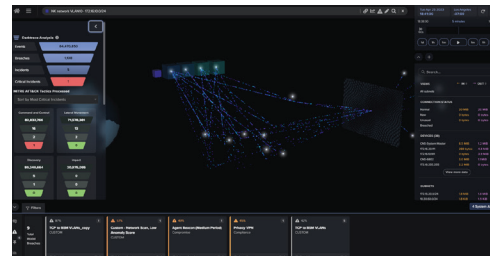


## NETWORK THREAT APPLIANCE (NTA)

Provides cyber threat analysis to aid in initiating or supporting counter-intelligence investigations. Based on the information, action can be taken to eliminate the threat from the organization.

### NTA OFFERS:

- 01. Proactive, realtime threat analysis
- 02. Proactive response to identified threats
- 03. Behavior analytics
- 04. Breach protection
- 05. Security operations center support



FOR MORE INFORMATION, PLEASE CONTACT US AT 1-800-325-0283 OR VISIT US.NIHONKOHDEN.COM

NIHON KOHDEN AMERICA • 15353 BARRANCA PKWY, IRVINE, CA 92618

NK Network Care is a service mark of Nihon Kohden.

MKT-01167 [B]